

# MY-D HAN-D

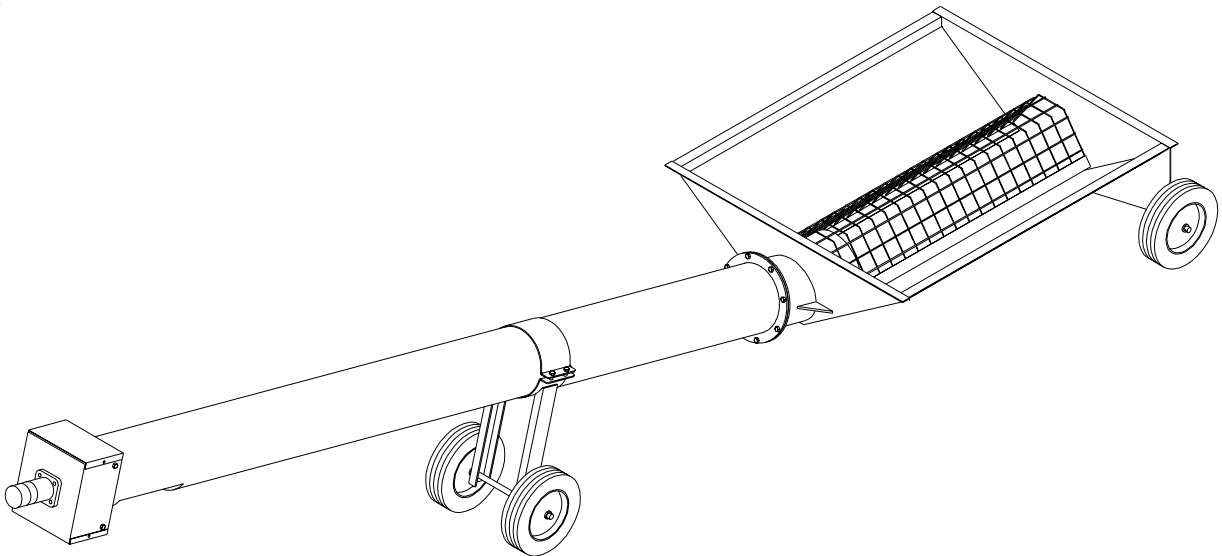
MFG. CO. INC.

DODGE CITY, KANSAS 67801 (316) 225-0263

## SWING-AWAY HOPPER MANUAL

8" & 10" INDEPENDENT

8" & 10" SWING-AWAY



Page Index

1 W aranty

2 Operator qualifications

3. -6. Safety instruction & Assembly instructions.

7.-10. Parts list

BE A SAFE OPERATOR  
 BY THINKING-BEFORE ACTING  
 AND  
 BY READING YOUR OPERATORS MANUAL.

AVOID ACCIDENTS

A careful operator is the best insurance against an accident.

Most accidents, whether they occur in industry, on the farm, at home or on the highway, are caused by the failure of some individual to follow simple and fundamental safety rules or precautions. for this reason most accidents can be prevented by recognizing the real cause and doing something about it before the accident occurs.

Regardless of the care used in the design and construction of any type of equipment, there are many conditions that cannot be completely safe guarded against without interfering with reasonable accessibility and efficient operation.

The complete observance of one simple rule would prevent many thousand serious injuries each year. that rule is: never attempt to clean, oil, or adjust a machine while it is in motion!

!! BE CAREFUL !!!

1. Keep all shields in place.
2. Stop machine to repair or clean.
3. Keep hands, feet and clothing away from power driven parts.
4. Keep off of machinery unless a platform is provided. do not crawl on equipment.
5. When equipment becomes disabled, disconnect power before attempting repairs.
6. Do not allow children to play near the equipment.

Limited W aranty

All My-D Han-D Mfg. Co. Inc. products have been manufactured from the very finest material and by skilled workmen, therefore, My-D Han-D Mfg. Co. Inc. guarantees its products against defective workmanship and material for a period of one year, to the original purchaser.

This warranty is not a service guarantee, nor is it any assurance that the product is perfectly designed or perfectly built; neither is it an expression of any belief that the product cannot be improved. Further, this warranty is not a guarantee against hazards such as wear, tear, misuse or misfortune nor against problems arising from incorrect set-up or servicing and is not a guarantee that the performance will meet the expectations of the purchaser.

This warranty is void should the product be repaired or modified in any way not authorized by My-D Han-D Mfg. Co. Inc. .

There is no other express warranty, implied warranties, including those of merchantability and fitness for a particular purpose other than the extent permitted by law any and all implied warranties are excluded. This is the exclusive remedy, and liability for consequential damages under any and all warranties are excluded to the extent exclusion is permitted by law.

Components such as electric motors, gasoline engines, etc., will carry only their respective manufacturer's warranty. This warranty does not cover any merchandise which, in the opinion of the company, has been subject to negligent handling, misuse, or accident.

W aranty claims on components will not be approved and credit issued until defective items are returned to the factory (prepaid) and we have approved the warranty claim. When credit is received by My-D Han-D Mfg. Co. Inc., we will issue credit in an amount equal to that received from the component supplier. My-D Han-D Mfg. Co. Inc. cannot warranty any merchandise, which, in the opinion of the company, has been subjected to negligent handling, misuse, or accident. All warranty claims must be submitted in writing. W ritten approval from the company must be obtained before any merchandise and warranty parts are returned to the factory. Purchaser will bear the cost of installation of warranted parts. W aranty Parts furnished FOB, My-D-Han-D Mfg. co., Dodge City, Kansas.

My-D Han-D Mfg. Co. Inc. reserves the right to make changes, improvements, and modifications at any time without incurring the obligation to make such changes, improvements, and modification on any products sold previously.

My-D Han-D Mfg. Co. Inc. will not be responsible or liable in any event for any loss of production, profits, downtime, accidents, or for any other special, indirect or consequential damages.

My-D Han-D Mfg. Co. Inc.  
 W est McArtor Road  
 Dodge City, Kansas 67801 (316) 225-0263

## OPERATOR QUALIFICATIONS

Operation of this equipment shall be limited to competent and experienced persons. In addition, anyone who will operate or work around this equipment must use good common sense. In order to be qualified, he or she must also know and meet all other requirements, such as:

1. Some regulations specify that no one under the age of 16 may operate power machinery. It is your responsibility to know what these regulations are in your area or situation.
2. Current OSHA regulations state in part: "At the time of initial assignment and at least annually thereafter the employer shall instruct EVERY employee in the safe operation of servicing of all equipment with which the employee is or will be involved."
3. Unqualified persons are to STAY OUT of the work area.
4. A person who has not read and understood all operating and safety instructions is not qualified to operate the machinery.

FAILURE TO READ THIS MANUAL AND ITS SAFETY INSTRUCTIONS  
IS A MISUSE OF THE EQUIPMENT.

### SIGN OFF SHEET

As a requirement of OSHA, it is necessary for the employer to train the employee in the safe operation and safety procedures with this equipment. We include this sign off sheet for your convenience and personal recordkeeping.

Date	Employer's signature	Employee's signature

WATCH FOR THIS SYMBOL. IT POINTS OUT IMPORTANT SAFETY PRECAUTIONS.



IT MEANS

"ATTENTION - BECOME ALERT!" YOUR SAFETY IS INVOLVED.



Occupational safety is of prime concern to the members of the AUGER AND ELEVATOR MANUFACTURERS COUNCIL. This swing-away hopper manual was written with the safety of the operator and the others who come in contact with the equipment as our prime concern. The manual presents day to day work problems encountered by the operator and other personnel. We wrote this manual to help you understand safe operating procedures for the equipment listed in the following pages. We want you as our partner in safety.

It is your responsibility as an owner, operator or supervisor to know and instruct everyone using this grain hopper at the time of initial assignment and at least annually thereafter, of the proper operating instructions, precautions and work hazards which exist in the operation of this hopper in accordance with osha regulation 1928.57.

The annual statistics of the national safety council show that many people die or suffer serious injury in needless farming accidents every year.

Don't become a victim. Put safety first in all farm operations.



SAFETY IS NO ACCIDENT



The following safety instructions, combined with common sense, will save your equipment from needless damage and the operator from unnecessary exposure to personal hazard. Pay special attention to the caution notes in the text. Review this manual at least once each year with new and/or experienced operators.



TRANSPORT SAFETY



1. Keep children away from the hopper when transporting and when preparing to transport.



PLACEMENT SAFETY



1. When the hopper is in place, chock the wheels of the hopper to keep it from moving.
2. Never position wheels on lumber or blocks to increase the hopper discharge height.



ELECTRIC SAFETY



1. Electric motors and controls should be wired by a qualified electrician and meet all standards set by federal, state and local electrical codes.
2. A magnetic starter should be used to protect your motor.
3. Your motor must have a manual reset button.
4. Electrical power must be disconnected before resetting your motor.
5. The motor controls and reset button must be located so that the operator has a full view of the entire operation.
6. Make sure the power source is disengaged and all parts have come to a complete stop before making any adjustments or servicing the hopper.
7. Keep all guards and shields in place when the hopper is in operation.
8. A main power disconnect switch, with the ability to be locked in the off position, should be provided. the switch should be locked whenever work is to be done on the hopper.
9. Keep clothing, hair and body away from all moving parts. it is a good idea to remove all jewelry before starting the operation.



### OPERATIONAL SAFETY



1. During regular operation of the hopper, one person should be in a position to monitor the operation. a second person should always be near by to shut down the hopper in case of an emergency.
2. Visually inspect the hopper periodically during operation for signs of unusual vibration, loose fasteners and noises.
3. Make sure everyone that isn't directly involved with the operation is out of the work area before operating or moving the hopper.
4. Make sure all safety devices, shields and guards are in place and are functional before beginning operation.



### SAFETY PRECAUTIONS



1. Keep away from all moving parts
2. Keep all belt guards and chain guards in place.
3. Disengage power before resetting motor.
4. Never attempt to clean, adjust or service the machine while it is in operation.
5. Keep work area clean of grease, oil, water, and/or other objects that could cause a slip or a fall.



### NORMAL SHUTDOWN



Make certain that the hopper and auger are empty before stopping the unit. Lock out the power source before leaving the work area.



### EMERGENCY SHUTDOWN



1. Should the auger be immediately shutdown under load, disconnect and lockout the power source. Clear as much grain from the auger as you can. Never attempt to restart when full.
2. Starting the unit under load may result in damage to the auger. Such damage is considered abuse of the equipment.
3. Reconnect power source and clear auger gradually.

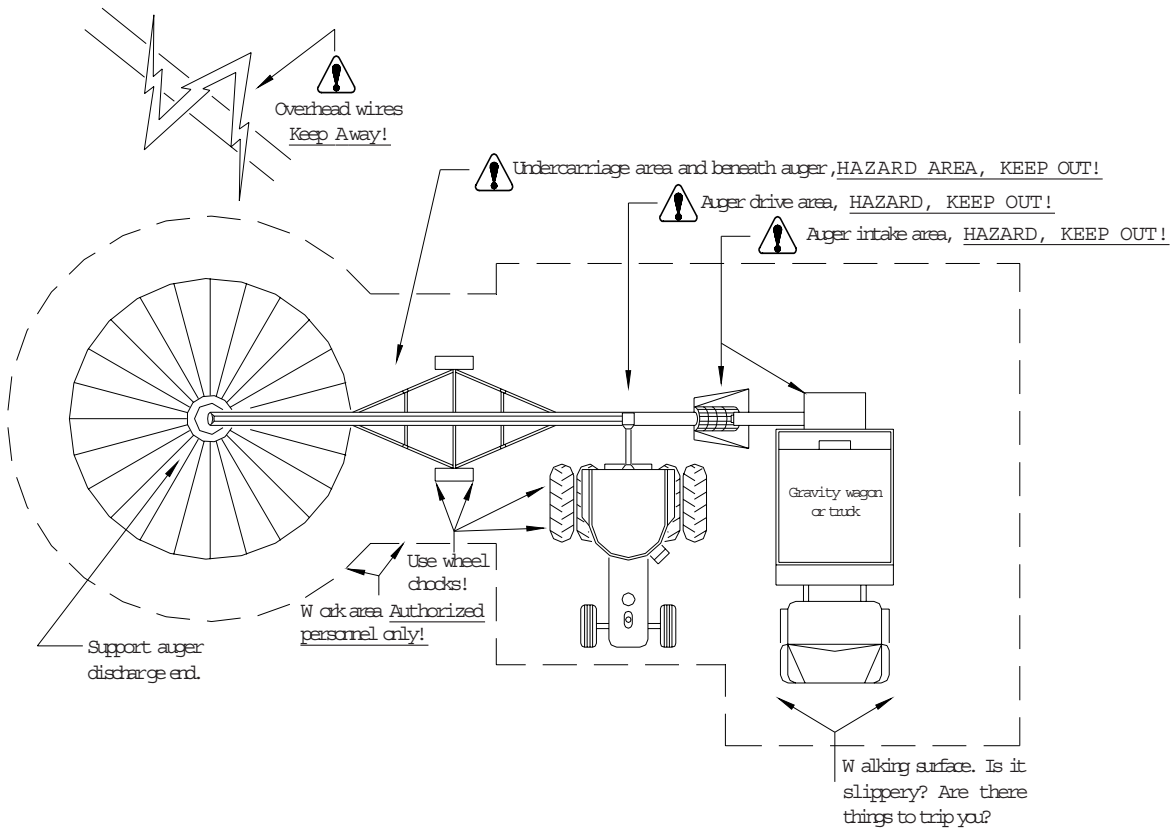
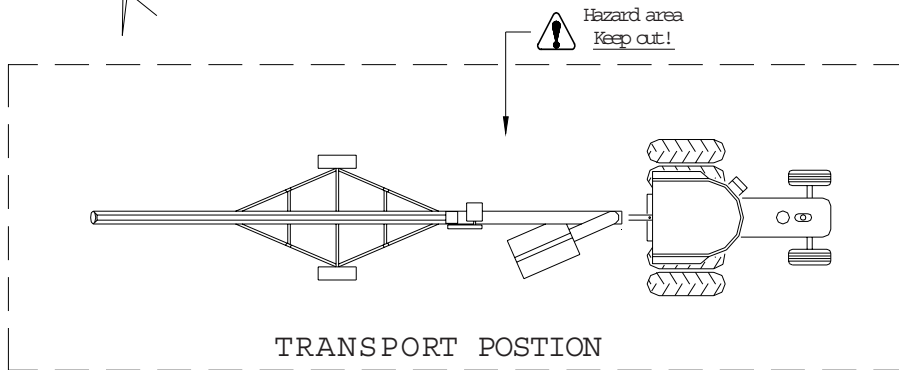
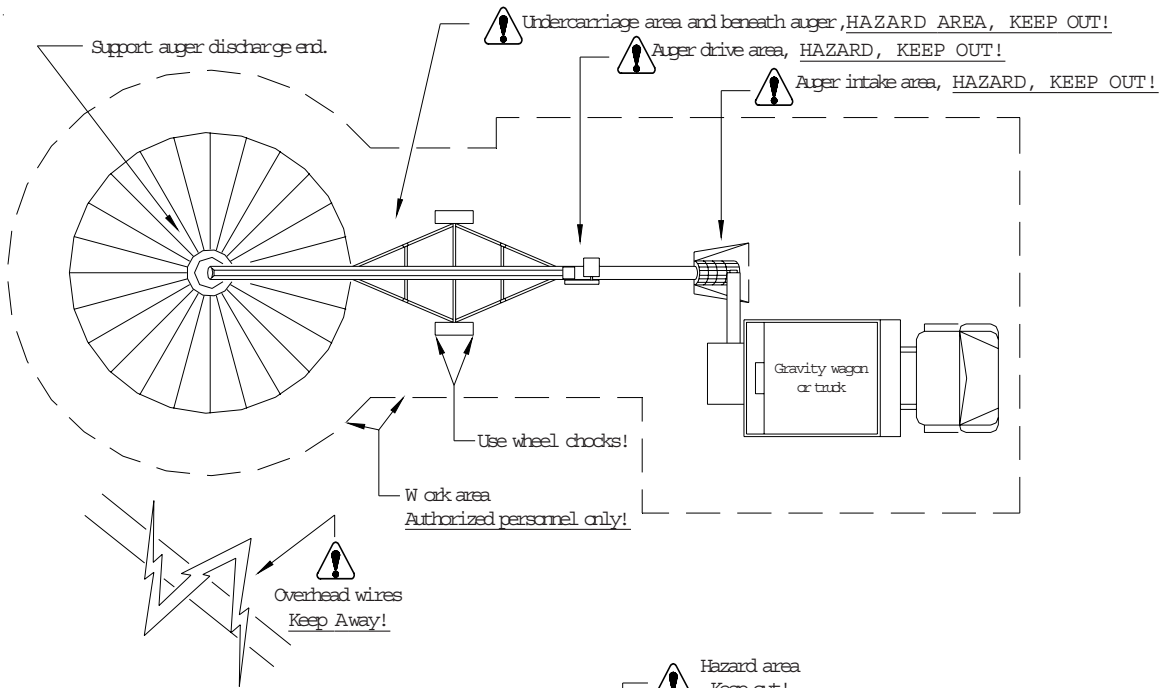
## WORK AREA SAFETY AND DIAGRAMS STATEMENTS

The following diagrams will show the manufacturers designated work areas.

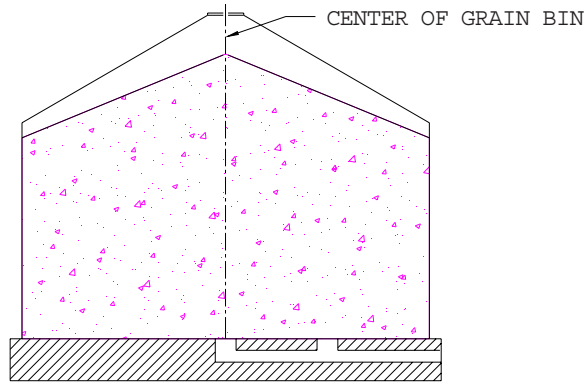
Under no circumstances should persons not involved in the operation be allowed to trespass into the work area.

It shall be the duty of all operators to see that children and/or other persons stay out of the work area! Trespass into the work area by anyone not involved in the actual operation, or trespass into the hazard area by anyone, shall result in an immediate shutdown by the operator.

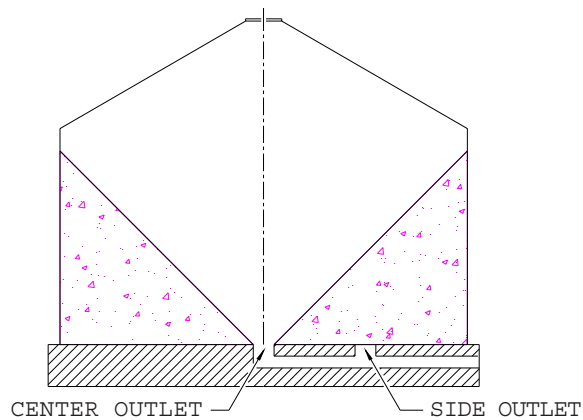
It shall be the responsibility of all operators to see that the work area has secure footing, is clean and free of all debris, and tools which might cause accidental tripping and/or falling. It shall also be their responsibility to keep the work area clean and orderly during the operation.



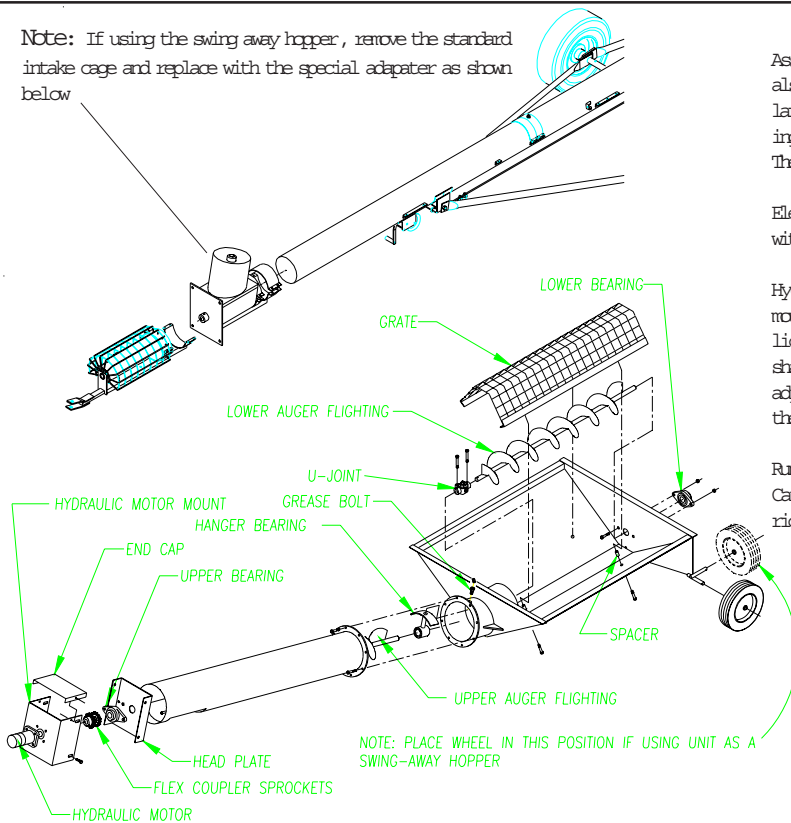
**! WARNING !**



USE ONLY CENTER OUTLET UNTIL NO GRAIN REMAINS ABOVE THIS OUTLET



Note: If using the swing away hopper, remove the standard intake cage and replace with the special adapter as shown below



### Assembly instructions

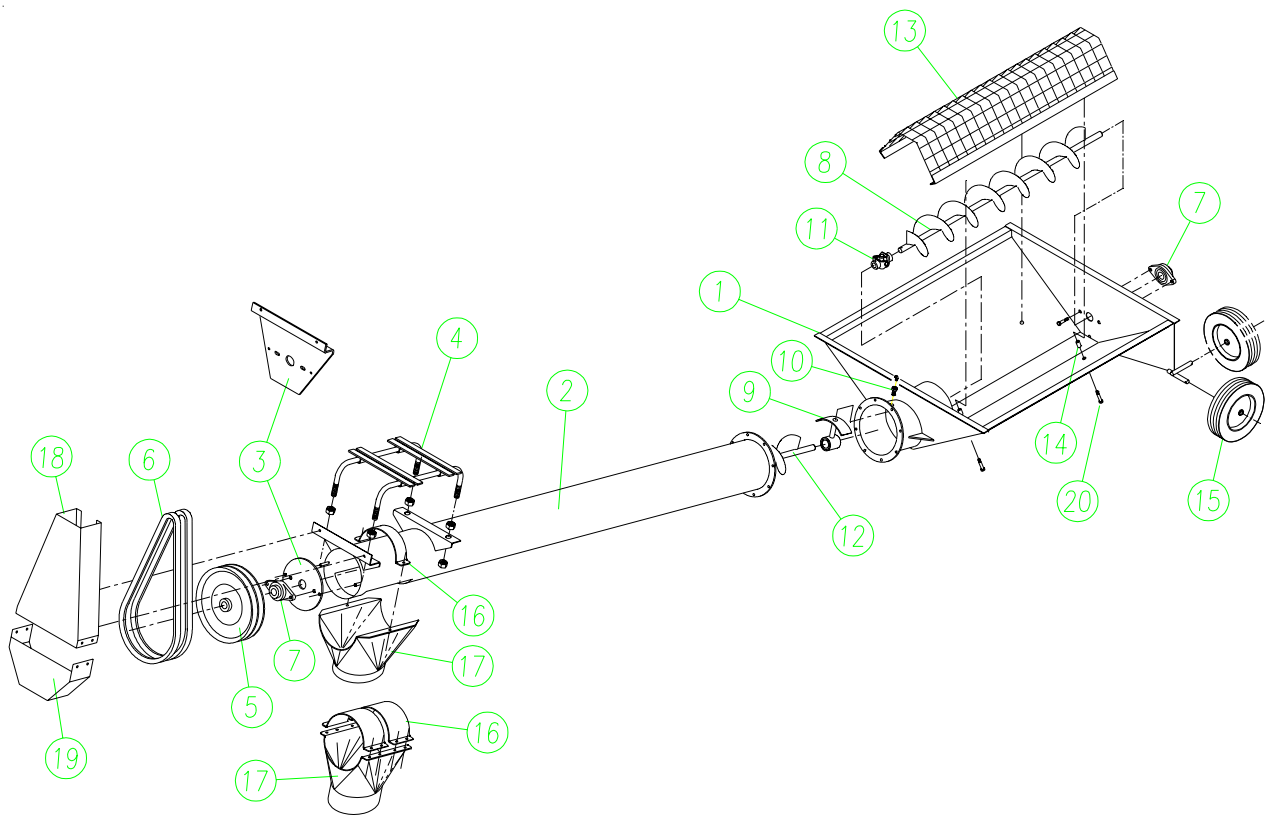
Assemble the hopper as shown in the diagram to the left and also on the following pages. Before the lower bearing lock collar is tightened, slide the "U-joint" up against the hanger bearing. The upper auger bearing lock collar can then be tightened. The grate is installed with spacers between it and the auger pan.

Electric: Install the electric motor and belt pulley and align with the belt pulley on the auger shaft.

Hydraulic: Attach the hydraulic motor to the hydraulic motor mount, and then mount the flex coupler sprocket to the hydraulic motor shaft. Mount the flex coupler sprocket to the auger shaft. Mount the hydraulic motor mount to the head plate, and adjust so the chain coupler does not bind when placed around the flex coupler sprockets.

Run the unit briefly to check for any binding or loose parts. Caution! Do Not run the unit empty for an extended period of time, or damage to the auger shafts could occur.

# ELECTRIC SWING-AWAY HOPPER



## 8" SWING-AWAY HOPPER

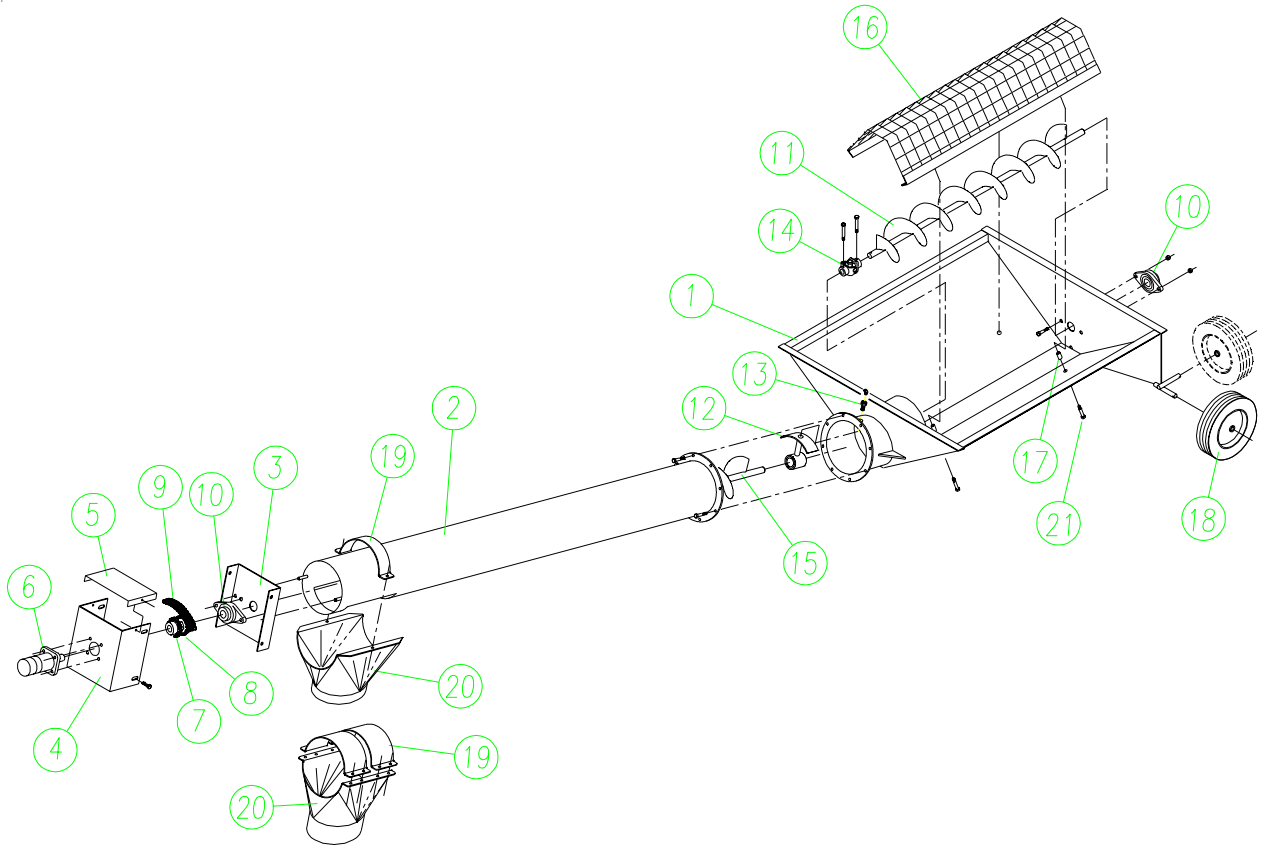
Item	Part No.	Description	Quan.
1	552976	Hopper weldment	1
2	552992	8" x 9'-0" Tube weldment	1
3	124750	8" Round head plate	1
4	817049	Electric motor mount	1
5	042754	2B-15.0 x 1-5/16" Bore sheave	1
6	035170	B-57 Belt	2
7	030189	1-5/16" 2-Bolt flg. bearing	2
8	553164	8" x 3'-7" flighting wldmt	1
9	835355	1-5/16" Hanger bearing	1
10	711937	1/2" Hanger brg. grease bolt	1
11	064600	1-5/16" to 1-5/16" U-Joint	1
12	553172	8" x 9' -8.5" flighting wldmt	1
13	553180	Hopper grate	1
14	553198	Hopper grate spacer	4
15	021550	10" Rubber tire	2
16	136283	8" x 2" Half band	1
17	711895	8" Spout	1
18	158444	Belt guard body	1
19	830679	Belt guard end cover	1

## 10" SWING-AWAY HOPPER

Item	Part No.	Description	Quan.
1	553206	Hopper weldment	1
2	553214	10" x 9'-0" Tube weldment	1
3	170936	10" Utility head plate	1
4	835884	Electric motor mount	1
5	042853	2B-18.0 x 1-1/2" Bore sheave	1
6	035402	B-68 Belt	1
7	030932	1-1/2" 2-Bolt flg. bearing	2
8	553230	10" x 3'-7" flighting wldmt	1
9	835181	1-1/2" Hanger bearing	1
10	711937	1/2" Hanger brg. grease bolt	1
11	553255	1-1/2" x 1-1/2" U-Joint	1
12	553248	10" x 9' -8.5" flighting wldmt	1
13	553305	Hopper grate	1
14	553198	Hopper grate spacer	4
15	021550	10" Rubber tire	2
16	108340	10" x 4" Half band	2
17	690966	10" Spout	1
18	158832	Belt guard body	1
19	830661	Belt guard end cover	1



# HYDRAULIC SWING-AWAY HOPPER



## 8" SWING-AWAY HOOPER

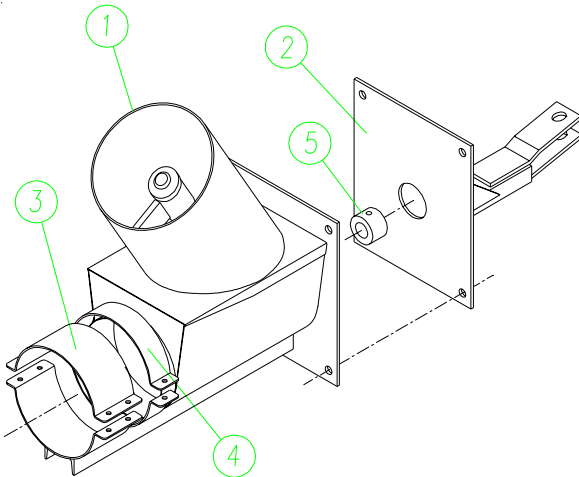
Item	Part No.	Description	Quan.
1	552976	Hopper weldment	1
2	552992	8" x 9'-0" Tube weldment	1
3	552901	Hydraulic head plate	1
4	552919	Hydraulic motor mount	1
5	552927	End cap for motor mount	1
6	553263	Hydraulic motor	1
7	553289	Flex coupler 1" bore	1
8	163238	Flex coupler 1-5/16" bore	1
9	045971	Chain coupler	1
10	030189	1-5/16" 2-Bolt flg. bearing	2
11	553164	8" x 3'-7" flighting wldmt	1
12	835355	1-5/16" Hanger bearing	1
13	711937	1/2" Hanger brg. grease bolt	1
14	064600	1-5/16" U-Joint	1
15	553172	8" x 9'-8.5" flighting wldmt	1
16	553180	Hopper grate	1
17	553198	Hopper grate spacer	4
18	021550	10" Rubber tire	2
19	136283	8" x 2" Half band	1
20	711895	8" Spout	1
21		3/8" x 2" HHCS w/ lock nut	4

## 10" SWING-AWAY HOOPER

Item	Part No.	Description	Quan.
1	553206	Hopper weldment	1
2	553214	10" x 9'-0" Tube weldment	1
3	553313	Hydraulic head plate	1
4	553321	Hydraulic motor mount	1
5	553339	End cap for motor mount	1
6	553347	Hydraulic motor	1
7	045963	Flex coupler 1-1/4" bore	1
8	553297	Flex coupler 1-1/2" bore	1
9	045971	Chain coupler	1
10	030932	1-1/2" 2-Bolt flg. bearing	2
11	553230	10" x 3'-7" flighting wldmt	1
12	835181	1-1/2" Hanger bearing	1
13	711937	1/2" Hanger brg. grease bolt	1
14	553255	1-1/2" x 1-1/2" U-Joint	1
15	553248	10" x 9'-8.5" flighting wldmt	1
16	553305	Hopper grate	1
17	553198	Hopper grate spacer	4
18	021550	10" Rubber tire	2
19	108340	10" x 4" Half band	2
20	690966	10" Spout	1
21		3/8" x 2" HHCS w/ lock nut	4

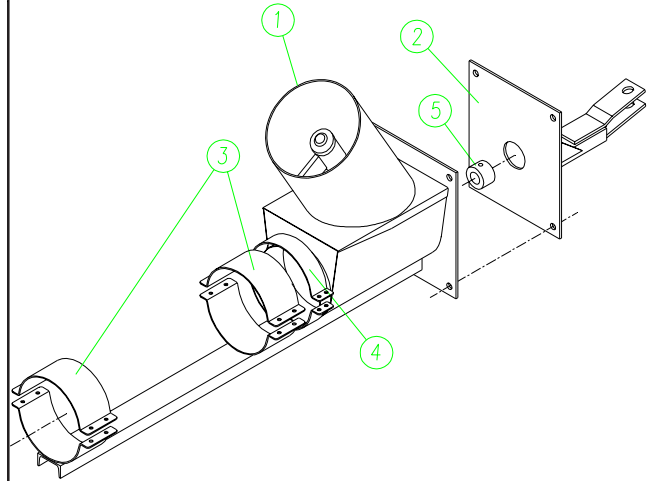
6" & 8" HOPPER BOOT

Item	Part No.	Description	Quan.
1	552786	8" Auger boot weldment	1
	553354	6" Auger boot weldment	1
2	553362	Tow hitch weldment	1
3	125864	8" x 4" Halfband	1
	126128	6" x 4" Halfband	1
4	136283	8" x 2" Halfband	1
	136291	6" x 2" Halfband	1
5	121723	1" Bronze brg (6" auger)	1
	129395	1-5/16" Bronze brg (8" auger)	1



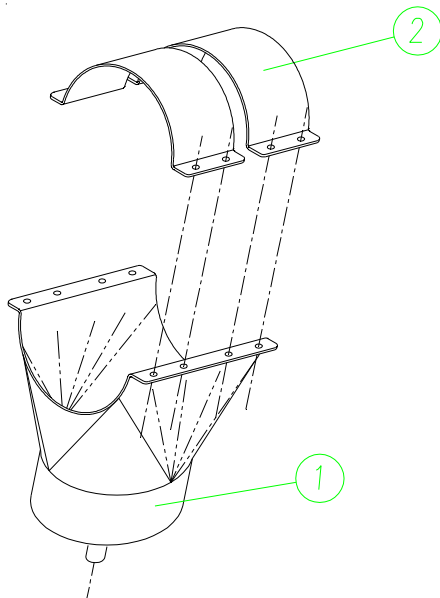
10" HOPPER BOOT

Item	Part No.	Description	Quan.
1	553370	10" Auger boot weldment	1
2	553362	Tow hitch weldment	1
3	108340	10" x 4" Halfband	2
4	176842	10" x 3" Halfband	1
5	168955	1-1/2" Bronze bearing	1



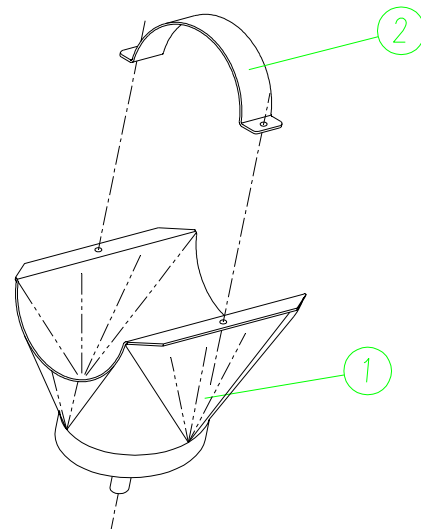
10" SPOUT

Item	Part No.	Description	Quan.
1	553396	10" Auger spout w/ pivot pin	1
2	108340	10" x 4" Half band	1



8" SPOUT

Item	Part No.	Description	Quan.
1	553404	8" Auger spout w/ pivot pin	1
2	136283	8" x 2" Half band	1



### 8" & 10" UNDERCARRIAGE (OPTIONAL)

Item	Part No.	Description	Quan.
1	553412	8" Undercarriage weldment	1
	553420	10" Undercarriage weldment	1
2	125864	8" x 4" Halfband	1
	108340	10" x 4" Halfband	1
3	021550	10" Wheel	2

