

MY-D

HAN-D

Mfg. Co. Inc.

Dodge City, Kansas 67801 (316) 225-0263

HYDRAULIC TAILGATE AUGER OPERATORS MANUAL

!!IMPORTANT!!

Completely read the assembly manual before attempting to assemble, install or use the auger.

Unpack the tailgate auger carton and make sure the number of parts match the parts list in the assembly manual. The auger will require at least two people to install,

!Caution! the person handling the upper portion of the tube must have a good sturdy work surface to stand on!!!

The first step is to install the rubber seals (item 6) on the hopper using 5/16" x 3/4" bolts.

Place the lower tube assembly (item 1) in place in the center of the tailgate opening.

The hopper flange must rest flat on the top surface of the truck bed so that grain can't leak under it. Center the hopper opening in the center of the tailgate opening and drill two 9/16" dia. holes in the bed to match the holes in the hopper.

Loosely fit the lower tube bracket (item 18) on the tube, with the truck bracket (item 19) in place on the lower tube bracket, mark the locations of the holes in the truck bracket on the back of the truck bed and drill two 7/16" dia. holes and bolt the truck bracket in place. The lower tube bracket is now ready to be tightened on the tube.

Place the upper tube assembly (item 2) in position on the lower tube assembly. Anchor together with the hinge pin (item 13), and secure with a cotter pin. With the upper tube resting against its stops, position the transport brace against the back of the truck bed. The bracket may have to be shimmed out from the bed to achieve a proper fit. Mark the location on the bed and drill (2) 7/16" holes. When positioning the transport brace, raise the tube just slightly to relieve some of the pressure on the stops that are located at the hinge area.

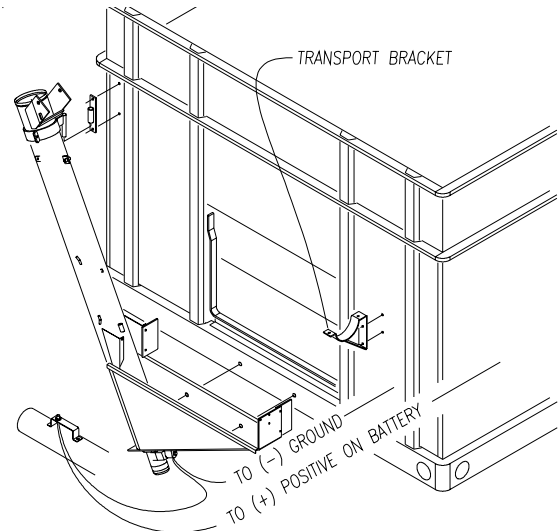
Raise the upper tube assembly into an upright position.

!!!Warning, the two tubes come together creating a pinch point, keep fingers clear of this area!!!

Install the gas strut (item 20), using the handle provided. Insert the handle into the socket on the side of the upper tube assembly and lower the upper tube back down into its transport brace (item 7).

Install the fill tube assembly onto the upper tube assembly and tighten the clamp (item 16). Attach the wire (item 26), and run the wire along the length of the fill tube assembly in its extended position and down along the length of the auger assembly. Make sure that extra slack is provided in the wire at the hinge area of the tube assembly and that the wire is clear of any possible pinch points. Attach the wire to the solenoid on the hydraulic motor. Check that all electrical connections are tight and insulated to prevent shorts.

Note: bolts for anchoring the tube brackets and transport brace to the back of the truck bed are not provided, since there is such a wide variation in the style of truck beds.



Limited Warranty

All My-D Han-D Mfg. Co. Inc. products have been manufactured from the very finest material and by skilled workmen, therefore, My-D Han-D Mfg. Co. Inc. guarantees its products against defective workmanship and material for a period of one year, to the original purchaser.

This warranty is not a service guarantee, nor is it any assurance that the product is perfectly designed or perfectly built; neither is it an expression of any belief that the product cannot be improved. Further, this warranty is not a guarantee against hazards such as wear, tear, misuse or misfortune nor against problems arising from incorrect set-up or servicing and is not a guarantee that the performance will meet the expectations of the purchaser.

This warranty is void should the product be repaired or modified in any way not authorized by My-D Han-D Mfg. Co. Inc..

There is no other express warranty, implied warranties, including those of merchantability and fitness for a particular purpose other than the extent permitted by law any and all implied warranties are excluded. This is the exclusive remedy, and liability for consequential damages under any and all warranties are excluded to the extent exclusion is permitted by law.

Components such as electric motors, gasoline engines, etc., will carry only their respective manufacturer's warranty. This warranty does not cover any merchandise which, in the opinion of the company, has been subject to negligent handling, misuse, or accident.

Warranty claims on components will not be approved and credit issued until defective items are returned to the factory (prepaid) and we have approved the warranty claim. When credit is received by My-D Han-D Mfg. Co. Inc., we will issue credit in an amount equal to that received from the component supplier. My-D Han-D Mfg. Co. Inc. cannot warranty any merchandise, which, in the opinion of the company, has been subjected to negligent handling, misuse, or accident. All warranty claims must be submitted in writing. Written approval from the company must be obtained before any merchandise and warranty parts are returned to the factory. Purchaser will bear the cost of installation of warranted parts. Warranty Parts furnished FOB, My-D Han-D Mfg. Co., Dodge City, Kansas.

My-D Han-D Mfg. Co. Inc. reserves the right to make changes, improvements, and modifications at any time without incurring the obligation to make such changes, improvements, and modification on any products sold previously.

My-D Han-D Mfg. Co. Inc. will not be responsible or liable in any event for any loss of production, profits, downtime, accidents, or for any other special, indirect or consequential damages.

My-D Han-D Mfg. Co. Inc.

West McArtor Road

Dodge City, Kansas 67801 (316) 225-0263

BE A SAFE OPERATOR

By thinking-before acting, and by reading your operators manual.

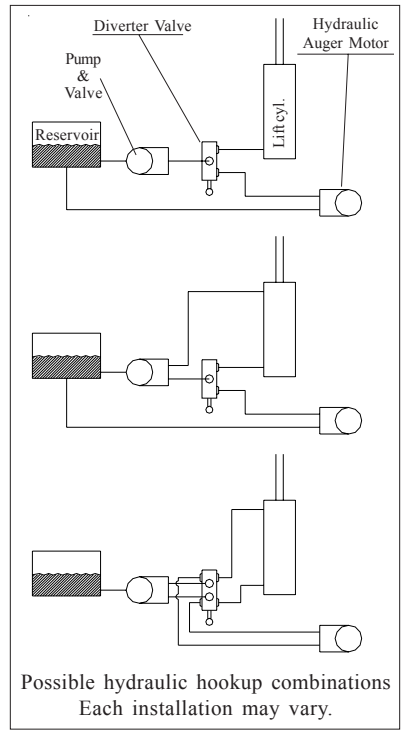
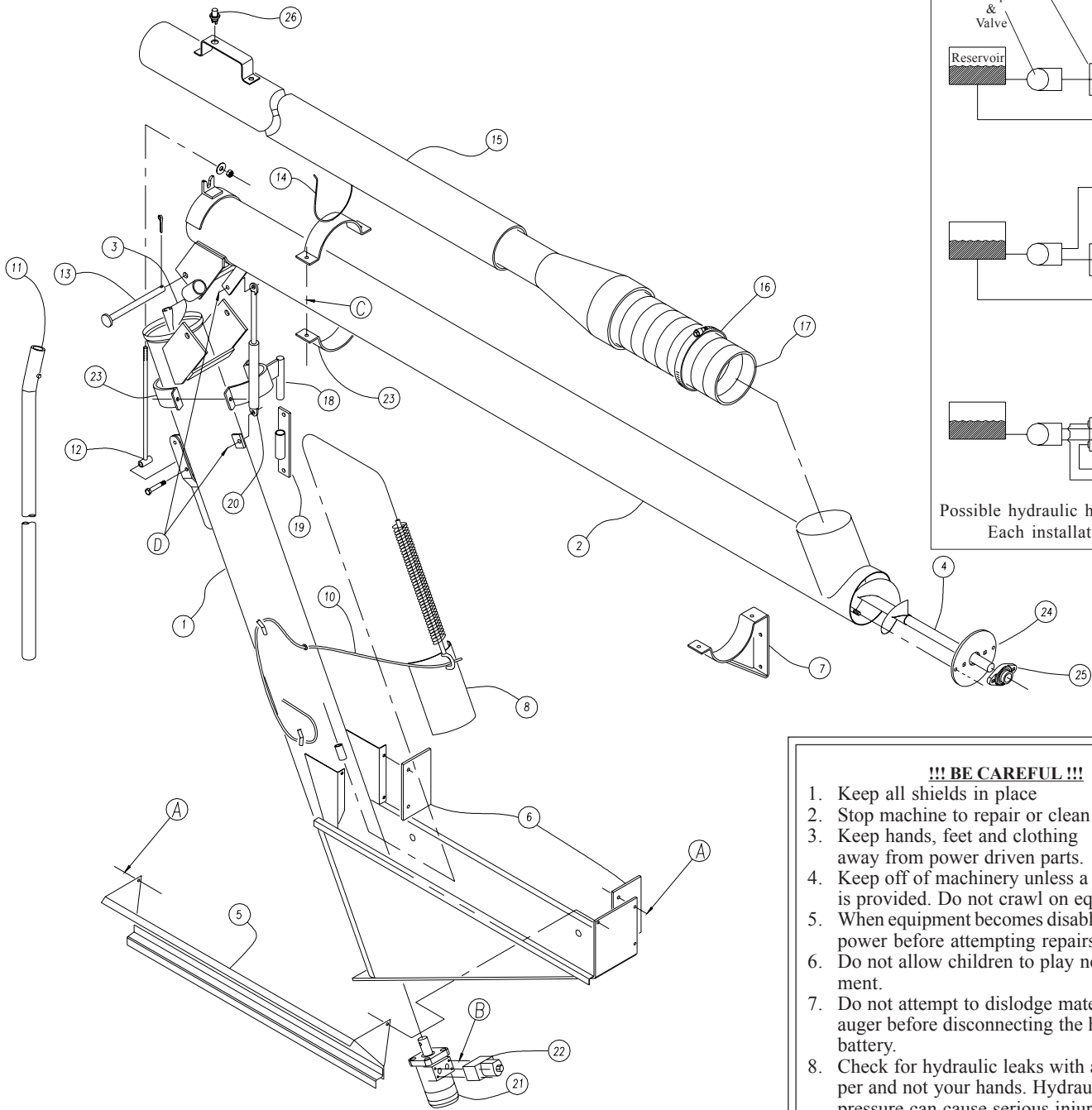
AVOID ACCIDENTS

A careful operator is the best insurance against an accident.

Most accidents, whether they occur in industry, on the farm, at home or on the highway, are caused by the failure of some individual to follow simple and fundamental safety rules or precautions. For this reason most accidents can be prevented by recognizing the real cause and doing something about it before the accident occurs.

Regardless of the care used in the design and construction of any type of equipment, there are many conditions that cannot be completely safe guarded against without interfering with reasonable accessibility and efficient operation.

The complete observance of one simple rule would prevent many thousand serious injuries each year. That rule is: never attempt to clean, oil, or adjust a machine while it is in motion!



- !!! BE CAREFUL !!!**
1. Keep all shields in place
 2. Stop machine to repair or clean
 3. Keep hands, feet and clothing away from power driven parts.
 4. Keep off of machinery unless a platform is provided. Do not crawl on equipment.
 5. When equipment becomes disabled, disconnect power before attempting repairs
 6. Do not allow children to play near the equipment.
 7. Do not attempt to dislodge material from the auger before disconnecting the hot wire to the battery.
 8. Check for hydraulic leaks with a piece of paper and not your hands. Hydraulic oil under pressure can cause serious injury!
 9. Make sure everyone is clear of the equipment before attempting to fold the top auger over into it's transport bracket.

Item	Part No.	Description	Quan.
1.	551630	Lower tube weldment	1
2.	551648	Upper tube weldment	1
3.	551655	Lower flighting weldment	1
4.	551663	Upper flighting weldment	1
5.	551671	Hopper extension	1
6.	551689	Hopper seal	2
7.	551697	Transport brace	1
8.	551705	Flow regulator gate	1
9.	551713	Spring	1
10.	551721	1/4" x 21' Rope	1
11.	551739	Handle	1
12.	551747	Tension rod	1
13.	551754	5/8" Pin	1
14.	551762	Fill tube rest	1
15.	551770	Fill tube assy. w/ flex tube & clamp	1
16.	551788	6" Clamp	1
17.	551796	6" Flex tube	1
18.	551804	Lower tube bracket	1
19.	551812	Truck bracket	1
20.	551820	Gas strut	1
21.	551838	Hydraulic motor	1
22.	551846	12 Volt solenoid valve	1
23.	136291	6" Halfband	2
24.	124784	6" Round headplate	1
25.	030015	1" Flange mount bearing	1
26.	056119	Push button switch	1
27.	551853	12 Volt wiring harness (not shown)	1