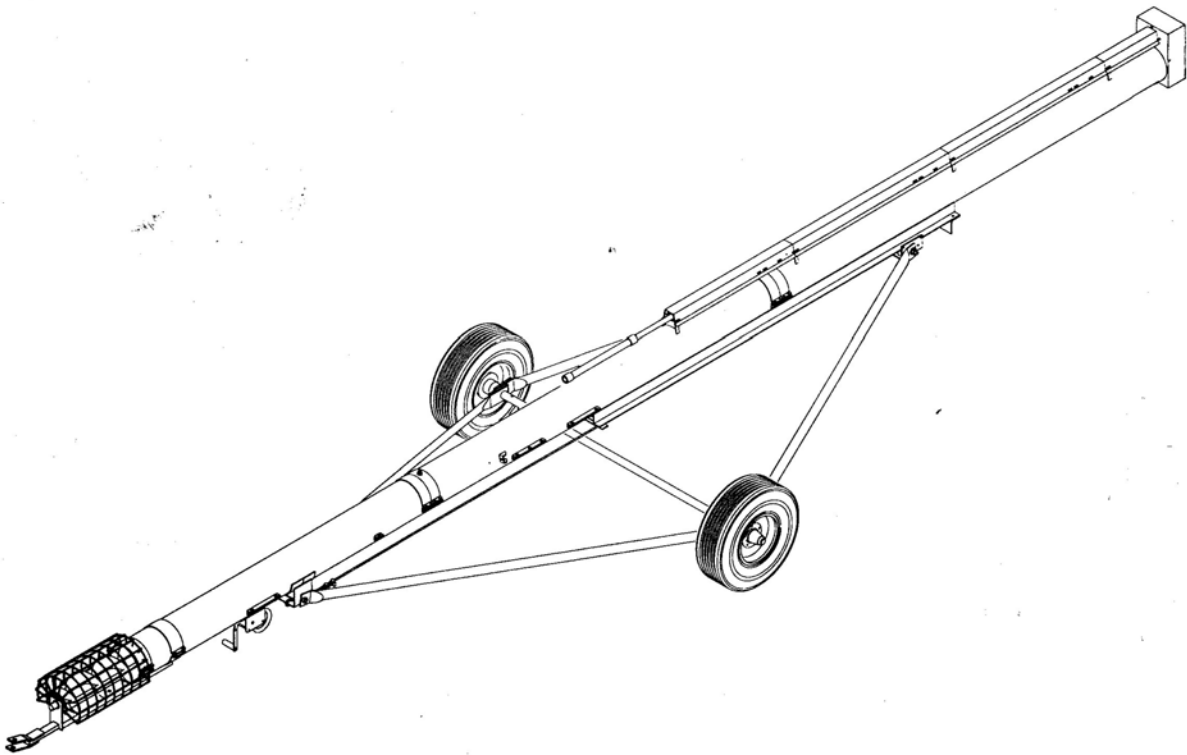


# MY-D HAN-D

Manufacturing Company, Inc.  
Dodge City, Kansas 67801 • (620) 225-0263

## 10" PORTABLE AUGER TOP DRIVE MODEL



**Assembly, Operation, & Parts Manual  
For 31', 41', 51', 61', 71' & 81' Models**

## **PAGE INDEX**

1. Warranty
2. Operator Qualifications
- 3-7 Safety Instructions
8. Operating Instructions & Specifications
9. Reach And Discharge Height Chart
10. Lubrication & Maintenance Guide
- 11-12 Assembly Instructions
- 13-15 Drive Options Parts List
- 16-27 31' Thru 81' Auger Parts List
- 28-32 Component Parts List
- 33 Bundle List

## **!!! Be Careful !!!**

1. Keep All Shields In Place
2. Stop Machine To Repair Or Clean
3. Keep Hands, Feet And Clothing Away From Power Driven Parts.
4. Keep Off Of Machinery Unless A Platform Is Provided. Do Not Crawl On Equipment.
5. When Equipment Becomes Disabled, Disconnect Power Before Attempting Repairs.
6. Do Not Allow Children To Play Near The Equipment.

## **BE A SAFE OPERATOR**

***By Thinking Before Acting  
& By Reading Your Operators Manual***

## **AVOID ACCIDENTS**

Most Accidents, Whether They Occur In Industry, On The Farm, At Home Or On The Highway, Are Caused By The Failure Of Some Individual To Follow Simple And Fundamental Safety Rules Or Pre-cautions. For This Reason Most Accidents Can Be Prevented By Recognizing The Real Cause And Doing Something About It Before The Accident Occurs.

Regardless Of The Care Used In The Design And Construction Of Any Type Of Equipment, There Are Many Conditions That Cannot Be Completely Safeguarded Against Without Interfering With Reasonable Accessibility And Efficient Operation.

## **A CAREFUL OPERATOR**

***Is The Best Insurance Against An Accident.***

The Complete Observance Of One Simple Rule Would Prevent Many Thousand Serious Injuries Each Year. That Rule Is: **Never Attempt To Clean, Oil, Or Adjust A Machine While It Is In Motion.**

### **LIMITED WARRANTY**

All My-D Hand-D Mfg. Co., Inc products have been manufactured from the very finest material and by skilled workmen, therefore, My-D Han-D Mfg. Co., Inc. guarantees its products against detective workmanship and material under normal and reasonable use for a period of ONE (1) year, after the date of delivery, to the original purchaser.

This warranty is not a service guarantee, nor is it any assurance that the product is perfectly designed or perfectly built; neither is it an expression of any belief that the product cannot be improved Further, this warranty is not a guarantee against hazards such as wear, tear, misuse or misfortune nor against problems arising from incorrect set-up or servicing and is not a guarantee that the performance will meet the expectations of the purchaser.

This warranty is void should the product be repaired or modified in any way not authorized by My-D Han-D Mfg. Co. Inc

There is no other express warranty, implied warranties, including those of merchantability and fitness for a particular purpose other than the extent permitted by law and all implied warranties are excluded. This is the exclusive remedy and liability for consequential damages under any and all warranties are excluded to the extent exclusion is permitted by law

Components will carry only their respective manufacturer's warranty This warranty does not cover any merchandise which, in the opinion of the company, has been subject to negligent handling, misuse, or accident.

Our obligation under this warranty is limited, however, to furnishing a replacement part for the defective part, or at our option to repairing the defective parts without charge either method F.O.B. our works, provided the consumer gives My-D Han-D Mfg. Co., Inc. written notice within ten (10) days after said part appears to be defective and affords My-D Han-D Mfg. Co., Inc. opportunity to inspect. Unless otherwise expressly agreed to by My-D Han-D Mfg. Co., Inc., the consumer shall bear the expense of installation.

My-D Han-D Mfg. Co., Inc. reserves the right to make changes, improvements, and modifications at any time without incurring the obligation to make such changes, improvements and modifications on any products sold previously.

My-D Han-D Mfg. Co., Inc. will not be responsible or liable in any event for any loss of production, profits, downtime, delays, accidents, or expenses, or for any other special, indirect or consequential damages.

**MY-D HAN-D MFG. CO. INC.**  
**10881 McARTOR ROAD Dodge City, Kansas 67801**  
**(620) 225-0263**





**WATCH FOR THIS SYMBOL.**  
**IT POINTS OUT IMPORTANT SAFETY PRECAUTIONS.**  
**IT MEANS "ATTENTION – BECOME ALERT!" YOUR SAFETY IS INVOLVED.**



Occupational Safety Is Of Prime Concern To The Members Of The Auger And Elevator Manufacturers Council. This Portable Auger Manual Was Written With The Safety Of The Operator And Others Who Come In Contact With The Equipment, As Our Prime Concern. The Manual Presents Day To Day Work Problems Encountered By The Operator And Other Personnel. We Wrote This Manual To Help You Understand Safe Operating Procedures For The Equipment Listed In The Following Pages. We Want You As Our Partner In Safety.

It Is Your Responsibility As An Owner, Operator Or Supervisor To Know And Instruct Everyone Using This Grain Auger At The Time Of Initial Assignment And At Least Annually Thereafter, Of The Proper Operating Instructions, Precautions And Work Hazards Which Exist In The Operation Of This Auger In Accordance With Osha Regulation 1928.57.

The Annual Statistics Of The National Safety Council Show That Many People Die Or Suffer Serious Injury In Needless Farming Accidents Every Year.

Don't Become A Victim. Put Safety First In All Farm Operations.



**SAFETY IS NO ACCIDENT**



The Following Safety Instructions, Combined With Common Sense, Will Save Your Equipment From Needless Damage And The Operator From Unnecessary Exposure To Personal Hazard. Pay Special Attention To The Caution Notes In The Text. Review This Manual At Least Once Each Year With New And/Or Experienced Operators.



**TRANSPORT SAFETY**



1. Always Keep Children Away From The Auger When Transporting And When Preparing To Transport.
2. Always Attach A Slow Moving Vehicle Sign To The Auger Before Transporting It On The Roadway.
3. Always Transport The Auger In The Full Down Position. The Lift Arms Of The Undercarriage Should Be Seated Against The Down Position Stop With Slight Tension On The Winch Cable And At Least Three Complete Wraps Of Cable Around The Winch Drum.
4. Make Sure The Hitch Pin Is Securely Attached And An Alternate Safety Chain Is Secured Between The Auger And Towing Vehicle.
5. Do Not Transport Auger At Speeds In Excess Of 20 Mph And Comply With Your State And Local Regulations Governing Marking, Towing And Maximum Width.
6. Keep The Auger Away From Overhead Objects And Electrical Wires. Electrocutation Can Occur Without Direct Contact.
7. Never Allow Persons To Stand Underneath Or Ride On The Auger When It Is Being Transported.



**PLACEMENT SAFETY**



1. Never Move The Auger Manually. When Releasing From Or Attaching To A Vehicle, Test The Intake End Of The Auger For Downward Weight So That It Will Not Become Uncontrollable And Tip Over. Lift The Auger Slowly And Keep The Intake End No Higher Than The Tractor Tow Bar. Be Sure All Grain Is Emptied Before Lifting Manually.
2. When Raising Or Lowering, The Wheels Must Be Free To Move And The Auger Must Be On A Level Surface Attached To A Vehicle.
3. The Auger Must Be Raised Before Placement, Check The Area Above The Incline Of Travel For Obstructions And Electrical Wires. Failure To Do So May Result In Serious Injury Or Death.
4. Move The Auger Into The Working Position With A Towing Vehicle. Do Not Move By Hand.
5. When The Auger Is In Place, Anchor It At The Intake End And/Or Support It At The Discharge End. Chock The Wheels Of The Auger And The Power Source To Keep Them From Moving In Either Direction.
6. Never Position Wheels On Lumber Or Blocks To Increase Auger Height.





## **PTO SAFETY**



1. Never Use A Pto Shaft Without A Rotating Pto Shield. Make Sure All Other Safety Shields Are In Place.
2. Make Sure The Pto Shaft Is Connected Properly At Both Ends.
3. Never Operate Pto Shaft At Speeds In Excess Of 540 Rpm.
4. Never Operate Pto Shaft At An Angle Exceeding 15 Degrees.
5. Make Sure The Pto Is Disengaged Before Starting The Pto Power Source.
6. Stay Out Of The Designated Hazard Area Of An Operating Pto. See Work Area Diagram (Page 6).
7. Keep Clothing, Hair And Body Away From All Moving Parts. It Is A Good Idea To Remove All Jewelry Before Starting The Operation.
8. Make Sure The Power Source Is Disengaged And All Parts Have Come To A Complete Stop Before Making Any Adjustments Or Servicing The Auger.
9. If The Operator Must Leave The Work Area, The Auger Must Be Shut Down Completely And The Ignition Key Or Coil Wire Removed From The Power Source. If This Is Not Possible, Remove The Pto Shaft From The Work Area.



## **ELECTRIC SAFETY**



1. Electric Motors And Controls Should Be Wired By A Qualified Electrician And Meet All Standards Set By Federal, State And Local Electrical Codes.
2. A Magnetic Starter Should Be Used To Protect Your Motor.
3. Your Motor Must Have A Manual Reset Button.
4. Electrical Power Must Be Disconnected Before Resetting Your Motor.
5. The Motor Controls And Reset Button Must Be Located So That The Operator Has A Full View Of The Entire Operation.
6. Make Sure The Power Source Is Disengaged And All Parts Have Come To A Complete Stop Before Making Any Adjustments Or Servicing The Auger.
7. Keep All Guards And Shields In Place When The Auger Is In Operation.
8. A Main Power Disconnect Switch, With The Ability To Be Locked In The Off Position, Should Be Provided. The Switch Should Be Locked Whenever Work Is To Be Done On The Auger.
9. Keep Clothing, Hair And Body Away From All Moving Parts. It Is A Good Idea To Remove All Jewelry Before Starting The Operation.



## **OPERATIONAL SAFETY**



1. During Regular Operation Of The Auger, One Person Should Be In A Position To Monitor The Operation. A Second Person Should Always Be Near By To Shut Down The Auger In Case Of An Emergency.
2. Visually Inspect The Auger Periodically During Operation For Signs Of Unusual Vibration, Loose Fasteners And Noises.
3. Make Sure Everyone That Isn't Directly Involved With The Operation Is Out Of The Work Area Before Operating Or Moving The Auger.
4. Make Sure All Safety Devices, Shields And Guards Are In Place And Are Functional Before Beginning Operation.

## **GRAIN BIN SAFETY**

1. Never Enter A Grain Bin While It Is Being Loaded. If The Grain Should Bridge, Causing The Flow To Stop, Shut Down The Auger And Break The Bridge Using A Length Of Pipe Or Other Such Tool That Will Prevent You From Entering The Bin.
2. If You Must Enter The Grain Bin, Shut Down The Auger And Lock Out The Power Source. Tie A Lifeline Around You And Have A Second Person Hold The Other End Of The Line From The Entry Point.
3. Use A Ladder For Descending, Stay Close To The Walls And Use The Ladder To Exit From The Bin.

## **SAFETY PRECAUTIONS**

1. Keep Away From All Moving Parts.
2. Keep All Belt Guards And Chain Guards In Place.
3. Disengage Power Before Resetting Motor.
4. Never Attempt To Clean, Adjust Or Service The Machine While It Is In Operation.
5. Keep Work Area Clean Of Grease, Oil, Water, And/Or Other Objects That Could Cause A Slip Or A Fall.

## **NORMAL SHUTDOWN**

Make Certain That The Hopper And Auger Are Empty Before Stopping The Unit. Lock Out The Power Source Before Leaving The Work Area.

## **EMERGENCY SHUTDOWN**

1. Should The Auger Be Immediately Shutdown Under Load, Disconnect And Lockout The Power Source. Clear As Much Grain From The Auger As You Can. Never Attempt To Restart When Full.
2. Starting The Unit Under Load May Result In Damage To The Auger. Such Damage Is Considered Abuse Of The Equipment.
3. Reconnect Power Source And Clear Auger Gradually.

## **WORK AREA SAFETY AND DIAGRAMS**

### **STATEMENTS**

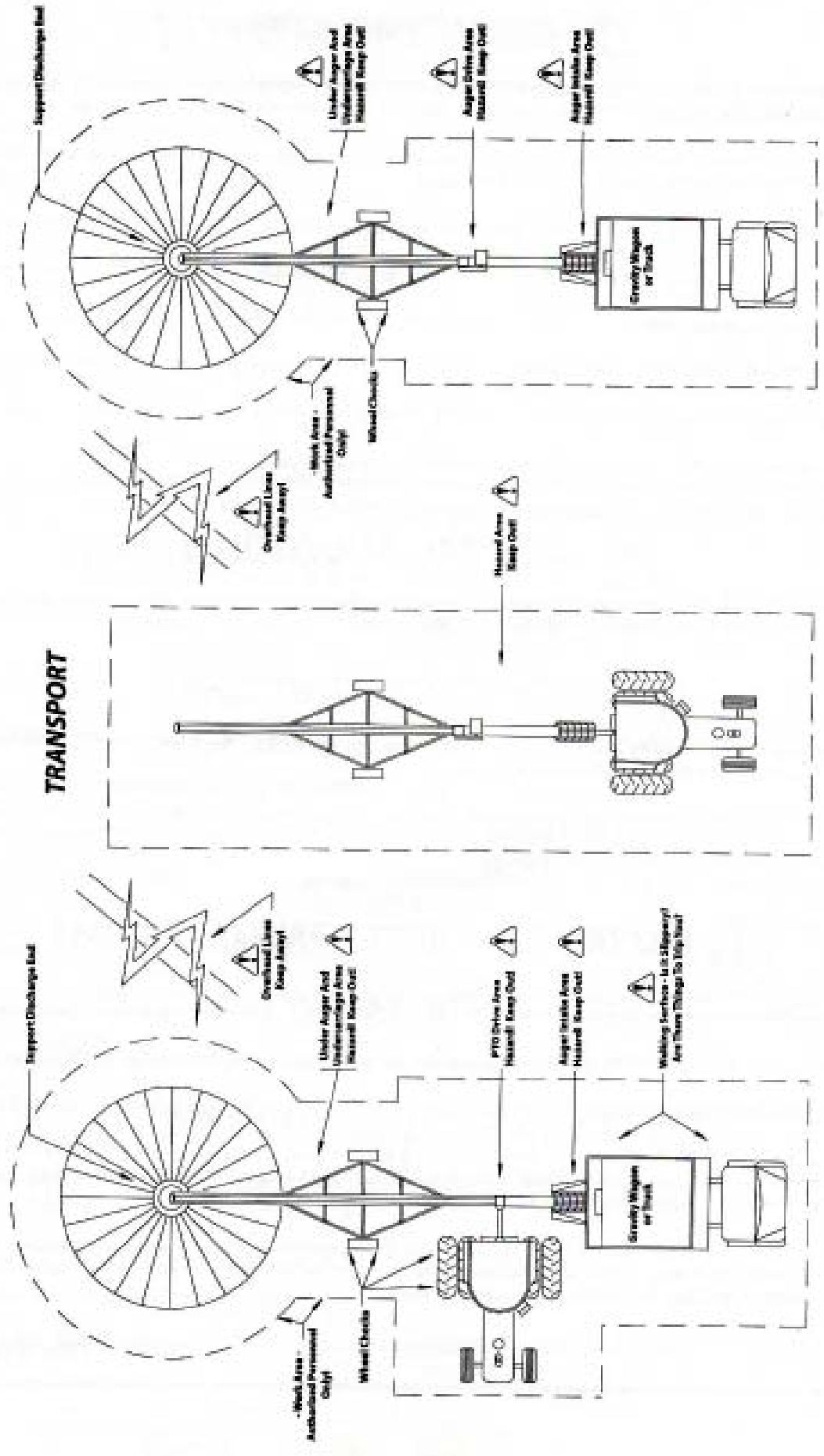
THE FOLLOWING DIAGRAMS WILL SHOW THE MANUFACTURERS DESIGNATED WORK AREAS.

Under No Circumstances Should Persons Not Involved In The Operation Be Allowed To Trespass Into The Work Area.

It Shall Be The Duty Of All Operators To See That Children And/Or Other Persons Stay Out Of The Work Area! Trespass Into The Work Area By Anyone Not Involved In The Actual Operation, Or Trespass Into The Hazard Area By Anyone, Shall Result In An Immediate Shutdown By The Operator.

It Shall Be The Responsibility Of All Operators To See That The Work Area Has Secure Footing, Is Clean And Free Of All Debris, And Tools Which Might Cause Accidental Tripping And/Or Falling. It Shall Also Be Their Responsibility To Keep The Work Area Clean And Orderly During The Operation.

# MANUFACTURER'S DESIGNATED WORK AREAS

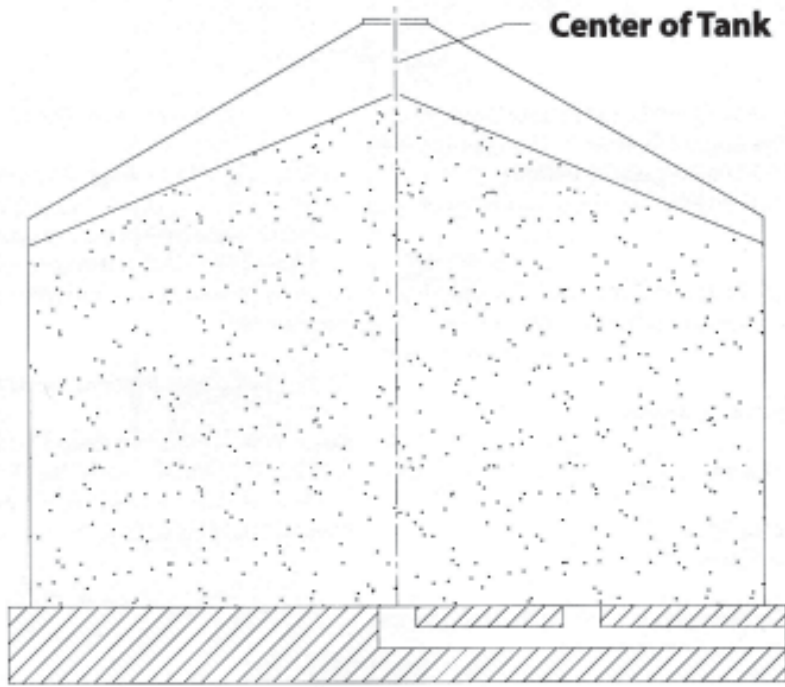




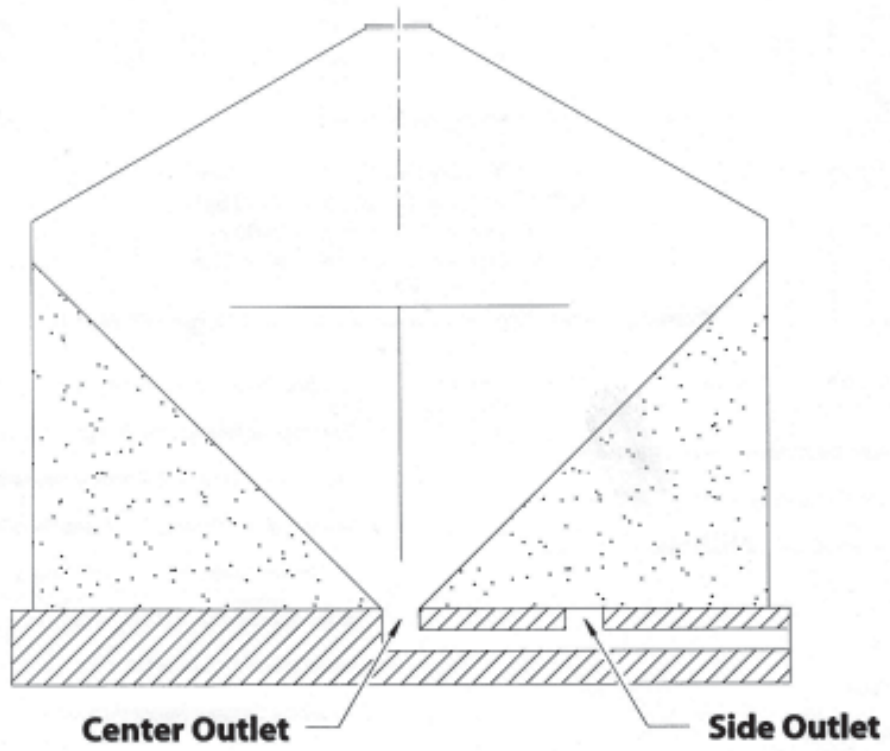
**WARNING**



**Tank To Be Filled With Grain From The Center Only**



**Use Only Center Outlet Until No Grain Remains Above This Outlet**



# OPTIONS, OPERATION AND SPECIFICATIONS

## Options

Gas Drive • Electric Drive • PTO Drive • Inlet Control Cover • Flexible Spout • Grain Hopper

## Operation

When Starting The Elevator For The First Time, Operate It Slowly So The Tube Can Fill Allowing The Auger To Center In The Tube. Operate At This Speed For The First 500-600 Bushels Allowing The Inside Of The Auger Tube To Polish Up. Then Increase The Speed To Normal Operation.

Do Not Allow An Empty Auger To Run At Full Speed. The Practice Will Only Lead To Unnecessary Wear And Damage Due To The Bouncing Of The Auger.

### Operating Speed

PTO Drive: 540 Rpm Tractor Speed.

Electric Drive: 1,750 Rpm Motor Speed.

Gas Drive: 1,800 Rpm Engine Speed (31' Only)

Note: Running Faster Than Recommended Speed Will Decrease The Life Of The Auger. *(and decrease flow as it will not drain from entering the lower end?)*

### Capacity And Horsepower Requirements

The Capacity Of The Auger Depends On The Type Of Material, Moisture Content, Operating Angle And The Available Horsepower. Dry Material Requires Less Horsepower Than High Moisture Material. As A Rule, Doubling The Moisture Content Will Cut The Capacity Almost In Half And More Than Double The Horsepower Requirement.

*The Following Specifications Are Based On Dry Corn (14%).*

**Note:** While Operating, Keep PTO Shaft As Straight As Possible. Prolonged Operation With The PTO Shaft At An Angle In Excess Of 15 Degrees Will Reduce U-Joint Life. Do Not Extend PTO Shaft Beyond 108" End To End.

## Specifications

Horsepower	Length	Gas	Electric	PTO
(Normal Operation)	31'	18	10	540 RPM
	41'	NA	15	540 RPM
	51'	NA	15	540 RPM
	61'	NA	20	540 RPM
	71'	NA	20	540 RPM
	81'	NA	20	540 RPM

\*Capacity ( Bu. Per Hr. Dry Grain)  
 45 Degrees Elevation = 2100 Bph  
 30 Degrees Elevation = 2800 Bph  
 15 Degrees Elevation = 3500 Bph

\*Variable Depending On Type Of Material And Degree Of Elevation.

Types Of Drives: Gas Drive Available On 31' Only; PTO & Electric Drives Are Available On All Lengths.

Overload Protection: Shear Bolt Coupler On PTO Model

Section Connectors: Flange Rings 9 Bolt

Gearboxes: Ductile Iron Gears 1 1/4" Shaft Tapered Roller Brgs.

Lengths: 31', 41', 51', 61', 71', 81'

Tube Diameter: 10"

Tube Thickness: 14 Ga.

Auger Shaft: 2" Sch. 40 Pipe

Flighting: 7 Ga.

Driveline Shaft: 1 1/4" Solid

Driveline Bearings: 1 1/4" Ball Bearing

Top Driveline Bearing: 1 1/4" Flange Mounted (Ball Bearings)

Top Flighting Bearing: 1 1/2" Flange Mounted (Ball Bearings)

Lower Flighting Bearing: 1 1/2" Bronze Bushing

Upper Drive Chain: No. 60 Double Roller Chain

Auger Speeds: 412 - 425 (PTO & Electric)

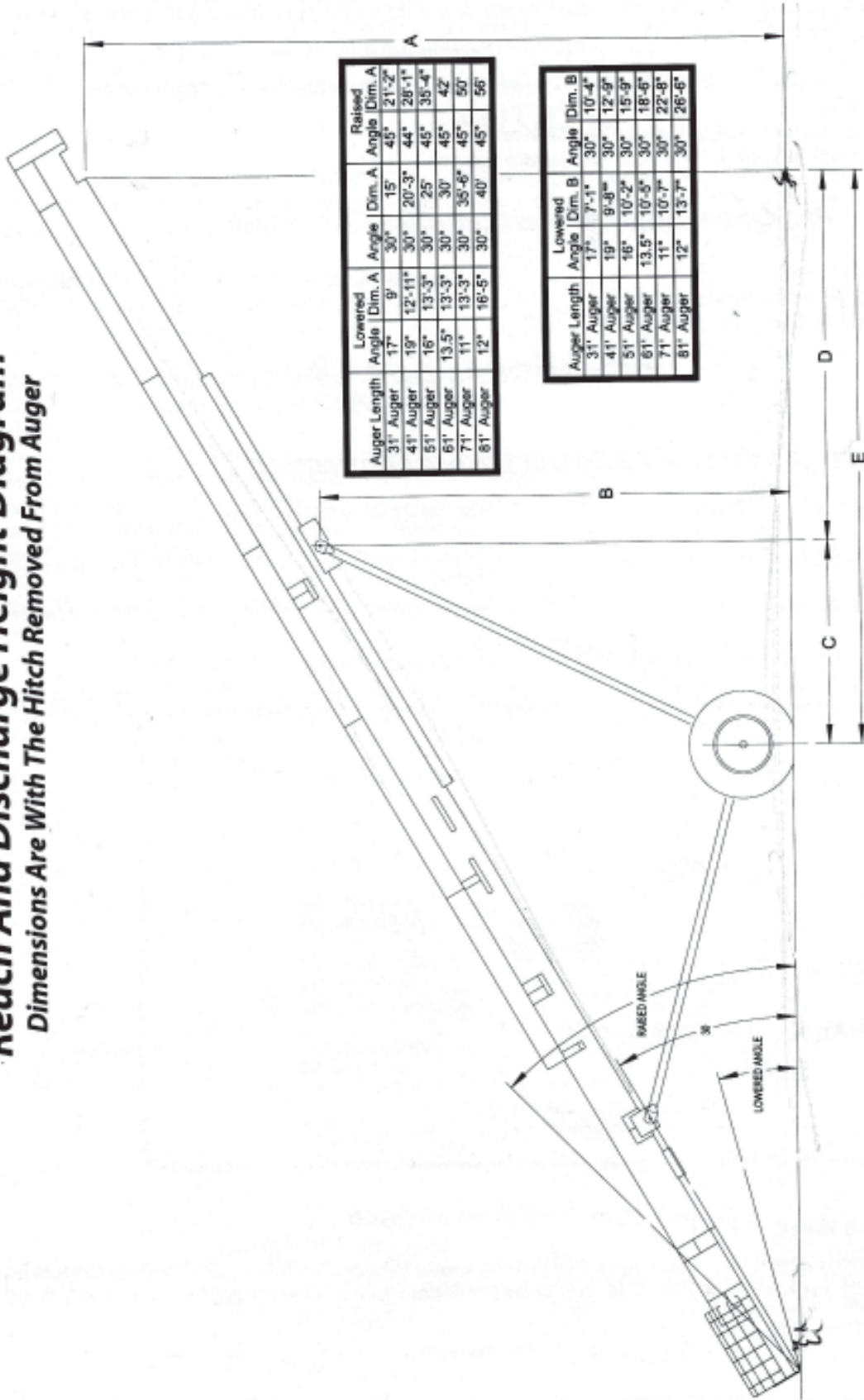
Wheel Tread: 31' & 41' = 96"; 51', 61', 71' & 81' = 121"

Maximum Delivery Height (At A 45 Deg. Elevation):  
 31' = 21'  
 41' = 28'  
 51' = 35'  
 61' = 42'  
 71' = 50'  
 81' = 56'



# Reach And Discharge Height Diagram

Dimensions Are With The Hitch Removed From Auger



Lowered		Raised	
Auger Length	Angle   Dim. A	Auger Length	Angle   Dim. A
3' Auger	17°   9'	30°   15'	45°   21'-2"
4' Auger	19°   12'-11"	30°   20'-3"	44°   28'-1"
5' Auger	16°   13'-3"	30°   25'	45°   35'-4"
6' Auger	13.5°   13'-3"	30°   30'	45°   42'
7' Auger	11°   13'-3"	30°   35'-8"	45°   50'
8' Auger	12°   16'-5"	30°   40'	45°   56'

Lowered	
Auger Length	Angle   Dim. B
3' Auger	17°   7'-1"
4' Auger	19°   9'-8"
5' Auger	16°   10'-2"
6' Auger	13.5°   10'-5"
7' Auger	11°   10'-7"
8' Auger	12°   13'-7"

Lowered	
Auger Length	Angle   Dim. D
3' Auger	17°   5'-1"
4' Auger	19°   8'-8"
5' Auger	16°   9'-10"
6' Auger	13.5°   10'-11"
7' Auger	11°   10'-9"
8' Auger	12°   11'-4"

Lowered		Raised	
Auger Length	Angle   Dim. E	Auger Length	Angle   Dim. E
3' Auger	17°   13'-2"	30°   11'-1"	45°   7'-8"
4' Auger	19°   17'-1"	30°   15'	44°   11'-3"
5' Auger	16°   22'-4"	30°   19'-11"	45°   15'-11"
6' Auger	13.5°   26'-5"	30°   22'-10"	45°   18'
7' Auger	11°   31'-4"	30°   27'-8"	45°   21'-5"
8' Auger	12°   35'-2"	30°   31'-4"	45°   25'-4"

*Lowered	
Auger Length	Angle   Dim. C
3' Auger	17°   8'-1"
4' Auger	19°   8'-7"
5' Auger	16°   12'-6"
6' Auger	13.5°   15'-6"
7' Auger	11°   20'-7"
8' Auger	12°   23'-10"

# Machine Inspection

After Delivery of Your New Auger and/or Completion Of Assembly And Before Each Use, Inspection Of The Machine Is Mandatory. This Inspection Should Include But Not Be Limited To:

1. Check To See That All Guards Listed In The Assembly Instructions Are In Place And Secured And Functional.
2. Are All Fasteners Tight?
3. Are All Belts And Chains Properly Adjusted? (See Service Section)
4. Check Oil Levels In Gearbox And Drive Box? (See Service Section)

## Pre-Operational & Maintenance Check List

1. Check Gearbox Oil Level.
2. Check Flighting For Correct Rotation.
3. Check To See That All Guards Are In Place.

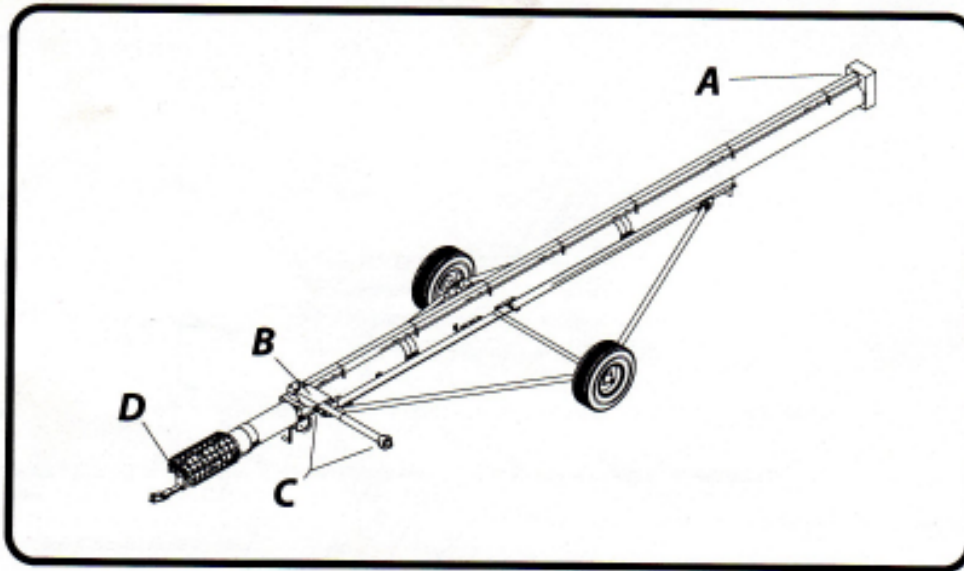


## Lubrication Guide



### !! Disengage All Power Before Lubricating !!

1. Grease Upper Auger Bearings (A) Every 6 Months.
2. Grease Lower Auger Bearings (D) Every 4 Months.
3. Grease PTO Bearings (C) Every 6 Months.
4. Grease Input Shaft Bearings On PTO Gearbox (B) Every 6 Months.
5. Brush Oil On Drive Chain Occasionally.
6. Keep Gear Case Filled To Shaft Level With #90 Transmission Oil.
7. Keep PTO Shaft And Tube Well Greased So They Move Freely.
8. Grease Hanger Bearings Frequently During Use.



## Auger Break-In And Service

Auger Break-in Is Recommended After Proper Assembly Of Your New My-D Han-D Auger. For Best Results, The Auger Should Be Operated At One-Half Capacity For The First 500 To 600 Bushels Using Dry Grain. This Will Allow The Inside Of The Tube To Polish.

*DO NOT RUN PRIOR TO BREAK IN*

## Gearbox Information

Should It Ever Become Necessary To Service A Gearbox, We Suggest That It First Be Removed From The Machine. Dismantle The Box And Clean All Parts. Replace Worn Or Damaged Parts. Refer To The Repair Parts Drawing For Parts And Reassembly. Gear Should Be Meshed To Have A .005 Back Lash.



## ASSEMBLY INSTRUCTIONS

We recommend assembling all of the auger tubes and flighting prior to mounting it on the undercarriage. Do this on a flat level surface for ease of assembly. Use wood blocks to support the tubes for best alignment. Start assembly at the lower end. Proceed to assemble your new My-D Hand-D auger after you have familiarized yourself with the parts shown on the parts pages that follow.



Make sure lower stops are located exactly as called out in the owner's manual; refer to the band location charts. If the lower stops are not properly located, the auger will nose over or undercarriage collapse may occur.

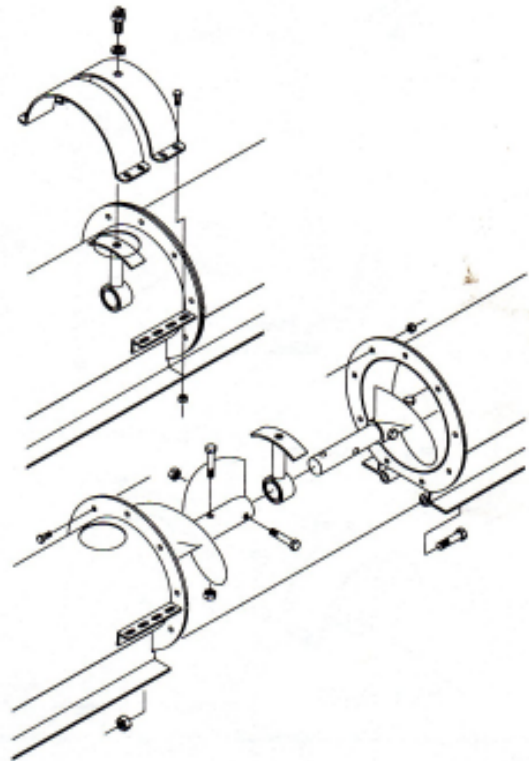
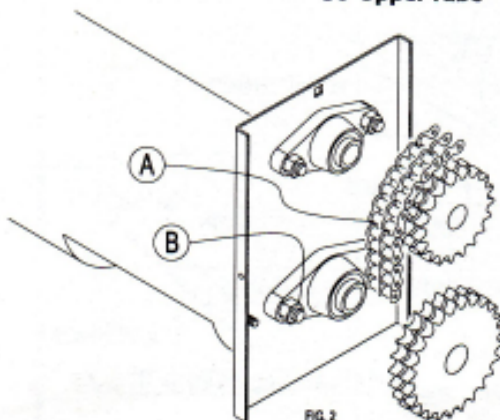
Assemble the auger tubes and flighting using the following steps (this procedure not applicable to 31' models).

Step A: Refer to the auger tube layout chart and align the auger tubes in the order they are to be assembled.

Step B: Starting at the lower tube, pull the flighting out of the tube 6" to 8". Install one (1) hanger bearing as shown in Figure on right. Attach the flighting using two (2) 1/2"x3" bolts and two (2) 1/2" lock nuts. On augers that use a mid tube, install the mid tube to the upper tube before installing the lower tube.

### AUGER TUBE LAYOUT CHART

31' Auger	31' Tube (One Piece)
41' Auger	20' Lower Tube 20' Upper Tube
51' Auger	20' Lower Tube 30' Upper Tube
61' Auger	30' Lower Tube 30' Upper Tube
71' Auger	30' Lower Tube 20' Mid Tube 20' Upper Tube
81' Auger	30' Lower Tube 20' Mid Tube 30' Upper Tube



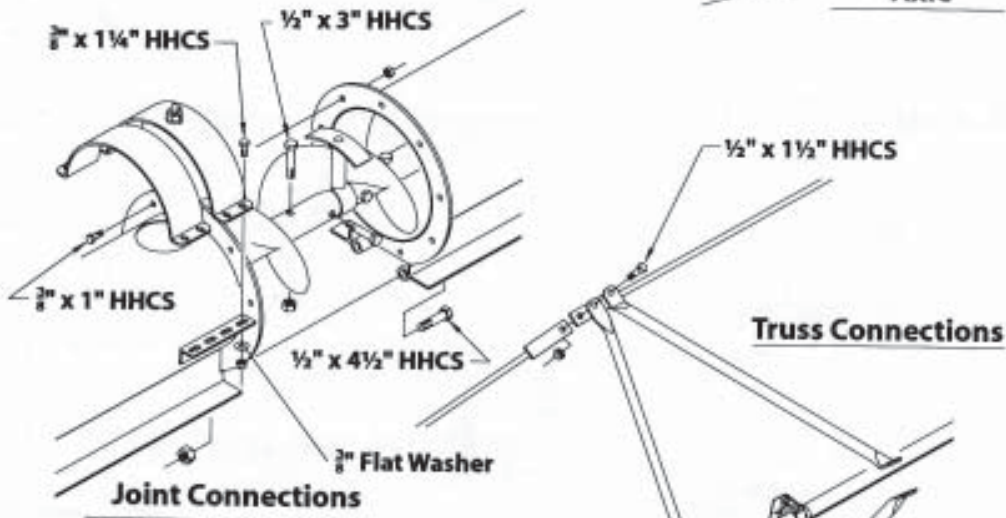
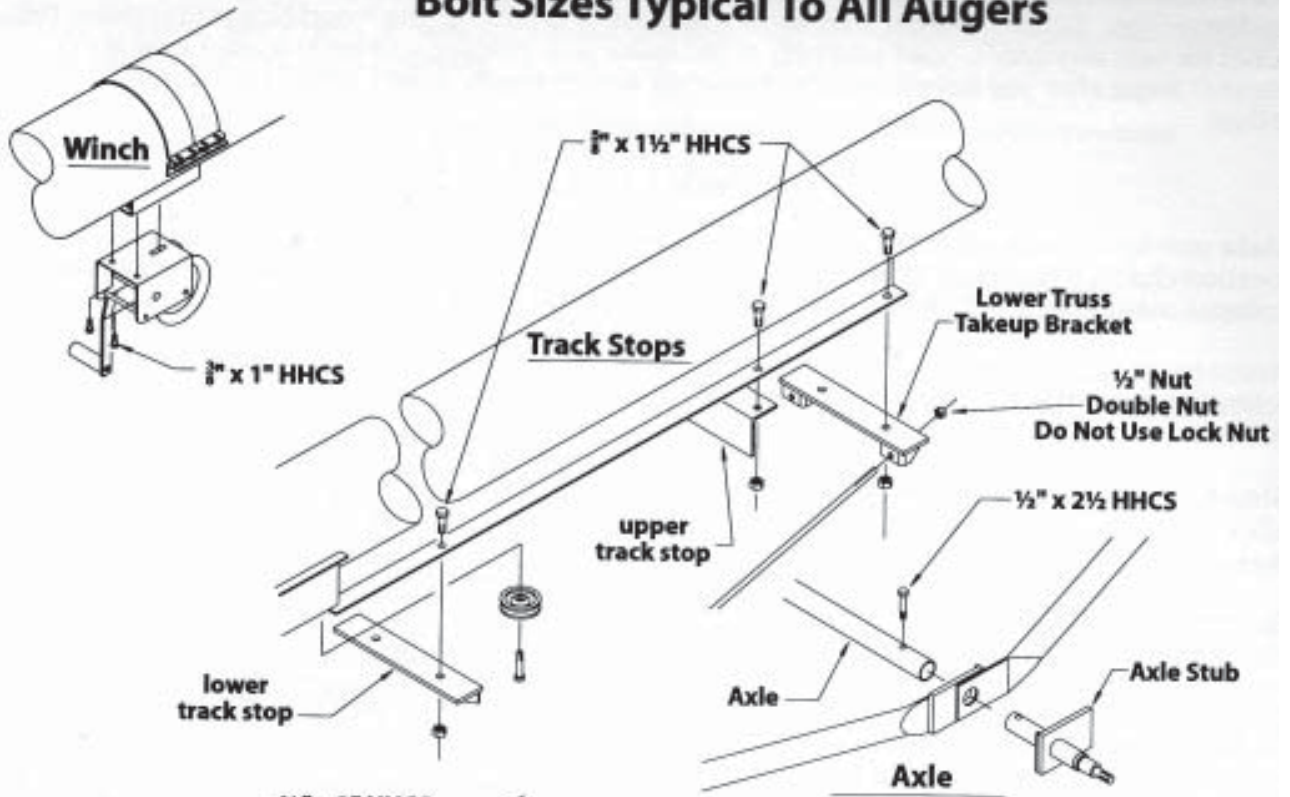
When attaching the cable to the track slide allow at least 8" of cable to stick out past the last cable clamp to keep cable from pulling out. Check the parts diagram for proper relation of the cable to the clamp. Before operating, check winch and make sure there is a minimum of three (3) wraps of cable around the winch drum.

#### DRIVE CHAIN AND BELT

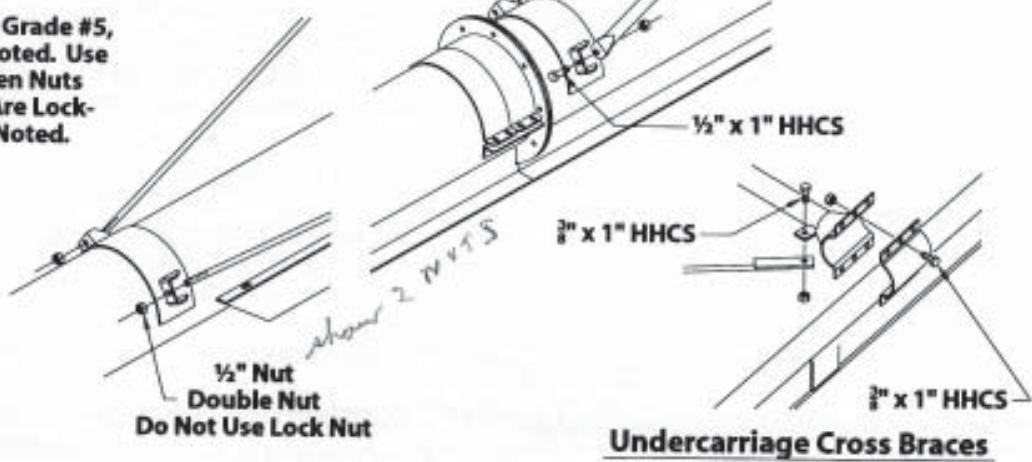
Keep the Drive Chain "A" adjusted to the point where it will not whip or jump teeth on the sprockets. Loosen bolts "B" (both sides) to adjust the chain. Keep the chain perfectly aligned by moving the sprockets in or out as needed.

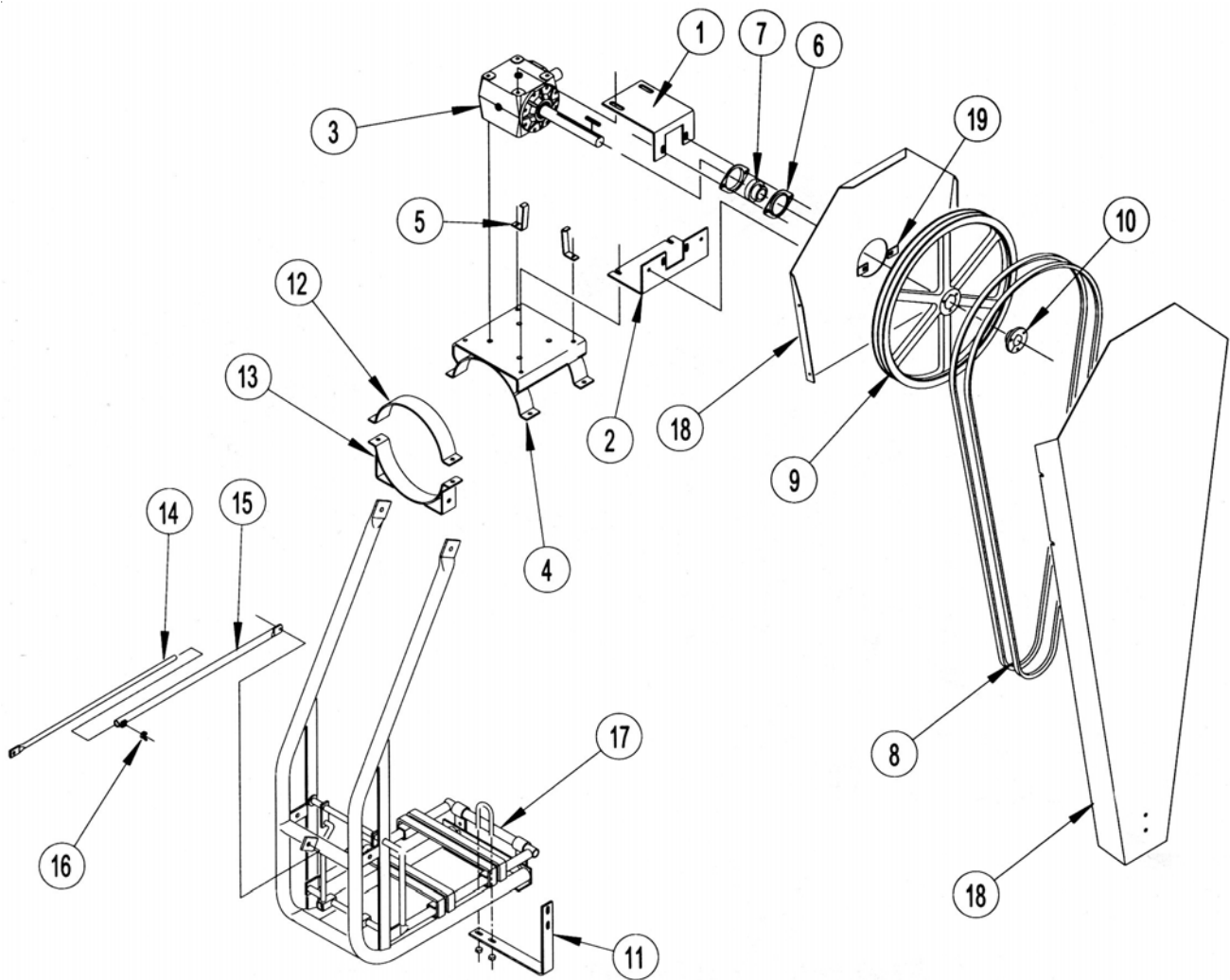
Keep belts (if machine is equipped with motor) adjusted to the point where it drives and does not slip on the sheaves.

# Bolt Sizes Typical To All Augers



**Note: All Bolts Are Grade #5, Unless Otherwise Noted. Use Flat Washers Between Nuts and slots. All Nuts Are Lock-Nuts Except Where Noted.**



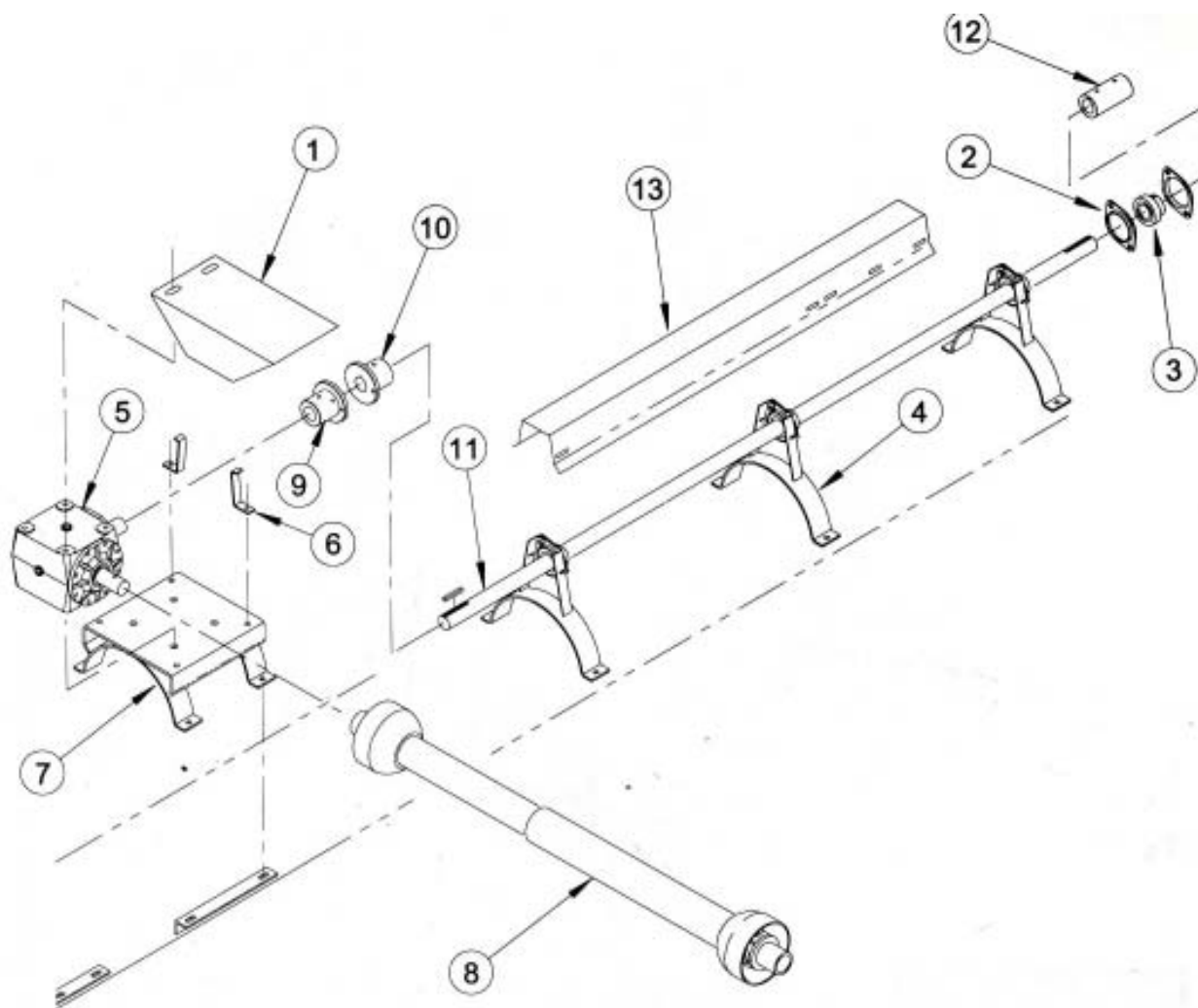


### Gas Option Part #601534

Key	Part No.	Description	Qty
1	177428	Top Bearing Bracket	1
2	177410	Bottom Bearing Bracket	1
3	069260	Gearbox Assembly	1
4	801332	Gearbox Mount	1
5	177592	Driveline Cover Mount	2
6	031187	1 1/4" Bearing Flangette	2
7	031179	1 1/4" Bearing w/ Lock Collar	1
8	035691	B-136 Belt	2
9	055954	2B - 18.4" SF Sheave	1
10	055962	1 1/4" SF Bushing	1
11	177451	Belt Guard Support	1
12	177543	10" Halfband (2" Wide)	1
13	838953	Engine Mount Hanger	1
14	143776	Stabilizer Rod	1
15	822403	Stabilizer Tube	1
16	811083	Wing Bolt	1
17	892315	Engine Mount	1
18	601542	Belt Guard Bundle	1
19	177378	Belt Guard Mounting Tabs	2





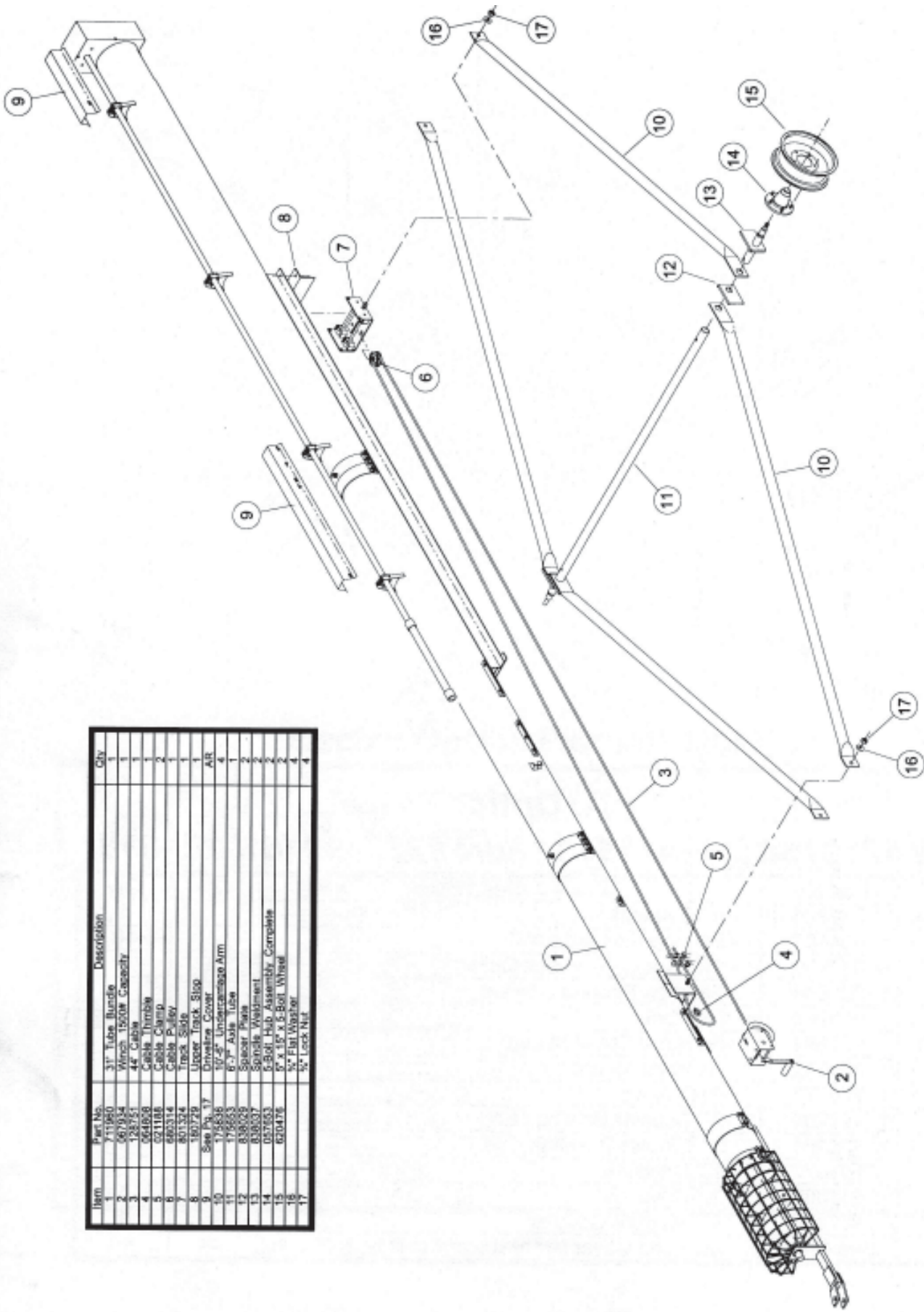


### PTO Option

**Part #712166 (31'-41'-51') • Part #712190 (61'-71'-81')**

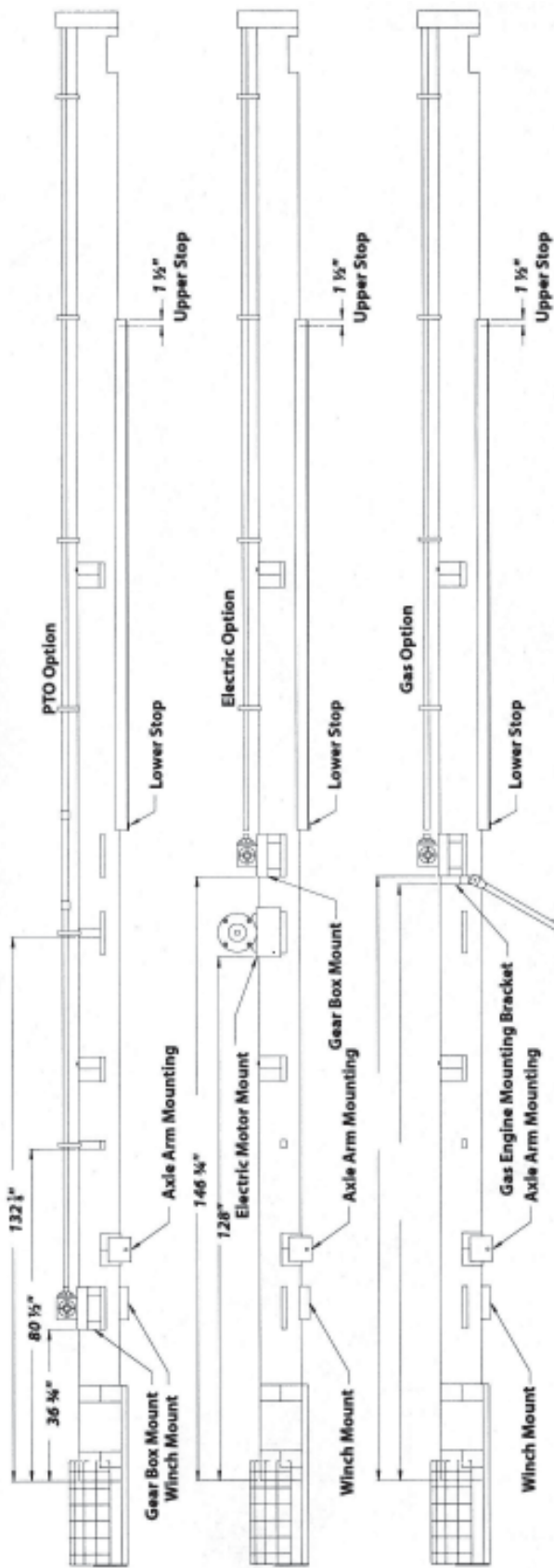
Key	Part No.	Description	Qty	Qty
1	712224	PTO Shield	1	1
2	031187	Bearing Flangette 1¼"	6	10
3	031179	1¼" Bearing w/ Lock Collar	3	5
4	801340	Band on Bearing Bracket	3	5
5	069260	Gearbox	1	1
6	177592	Driveline Cover Mount	2	2
7	801332	Gearbox Mount	1	1
8	700773	PTO Shaft	1	1
9	177204	2" Coupler Gearbox End	1	1
10	838961	2" Coupler Driveline End	1	1
11	611079	10' Driveline	1	0
	611087	20' Driveline	0	1
12	177196	4" Driveline Coupler	1	1
13	See Chart	Driveline Cover (see band location chart for qty & lengths)	<<	<<

Item	Part No.	Description	Qty
1	411980	31" Tube Bundle	1
2	501950	Winch 1500# Capacity	1
3	931254	4" Cable	1
4	064658	Cable Thimble	1
5	021188	Cable Clamp	2
6	660314	Cable Pulley	1
7	801324	Track Slide	1
8	180729	Upper Track Slido	1
9	See Pg. 17	Driveline Cover	AIR
10	175636	1/2" 5' Undercage Arm	4
11	175653	6" 7" Axle Tube	2
12	838029	Spacer Plate	2
13	838037	Spindle Washment	2
14	057653	5-Bolt Hub Assembly Complete	2
15	620476	8" x 15" x 5-Bolt Wheel	2
16		5/8" Flat Washer	2
17		5/8" Lock Nut	4



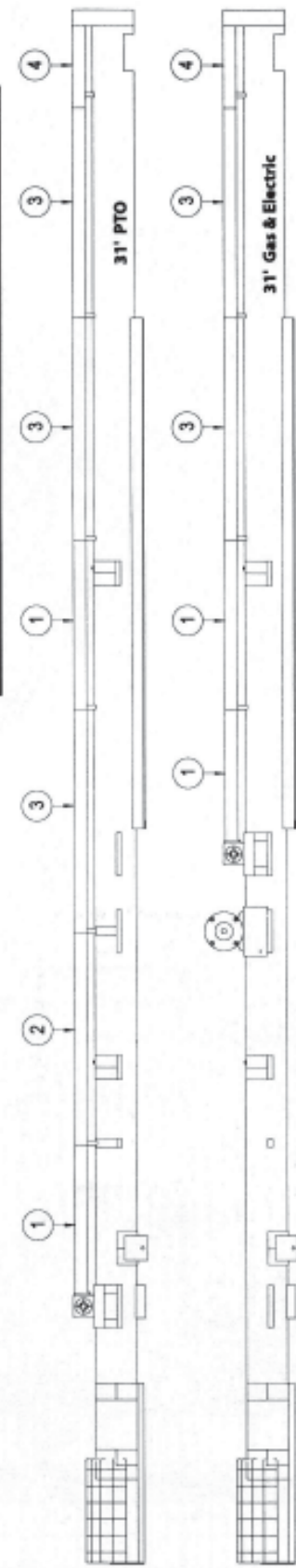


# 31' Band Locations



Item	Part No.	Description	Quantity	
			PTO	Gas/Elec.
1	176368	Driveline Cover 42"	2	2
2	176396	Driveline Cover 52"	1	0
3	176404	Driveline Cover 56"	3	2
4	176370	Driveline Cover Top	1	1

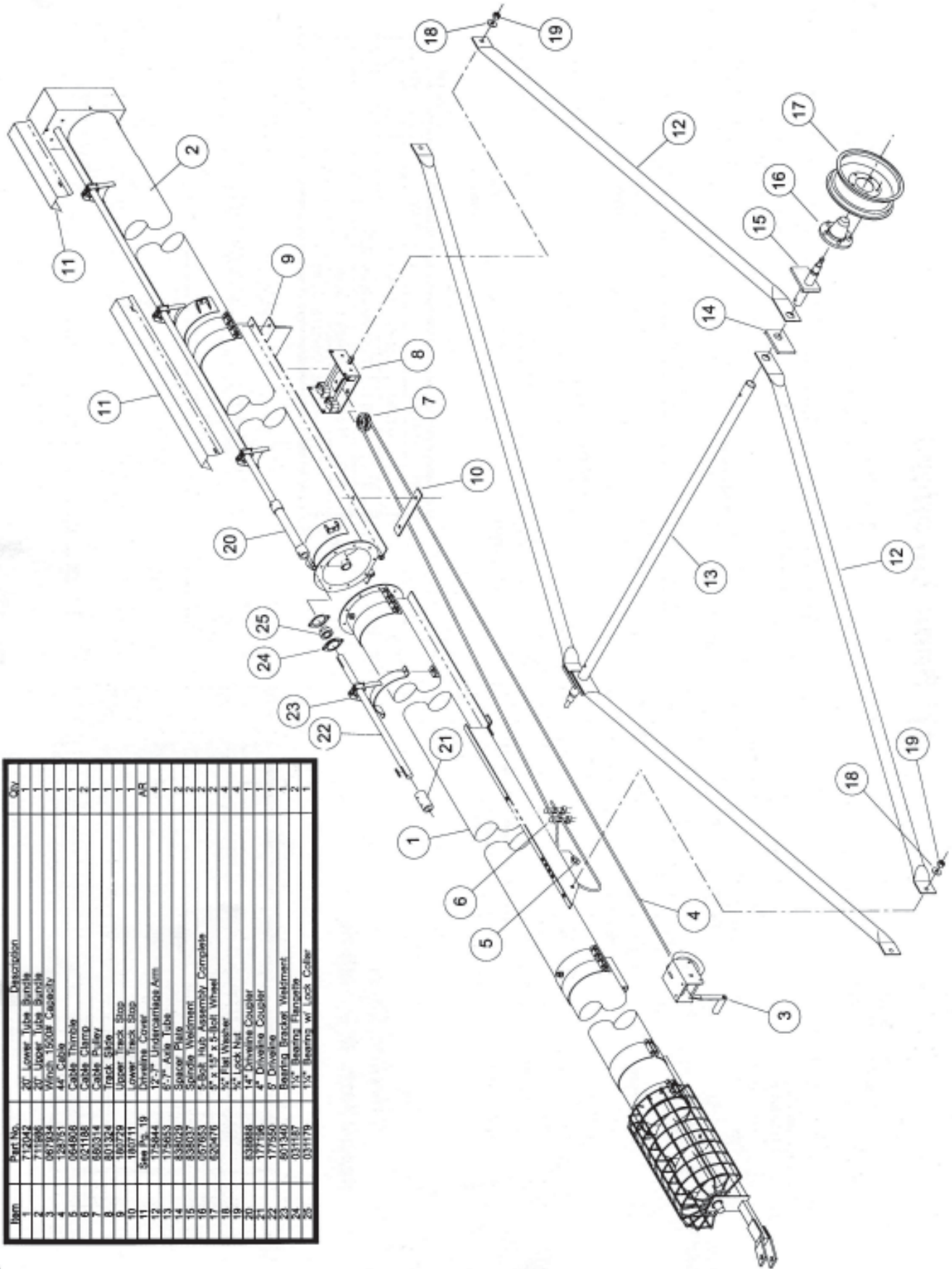
## Driveline Cover Repair Parts & Installation



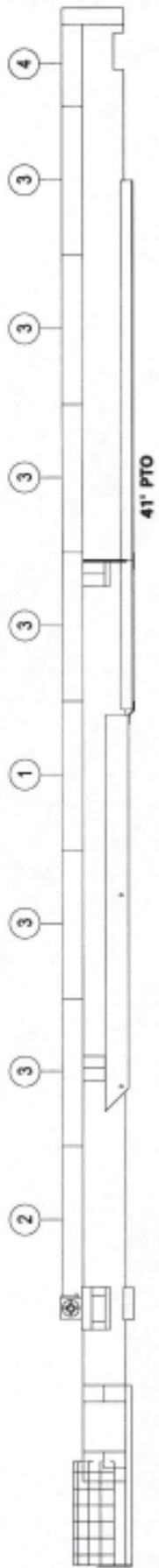
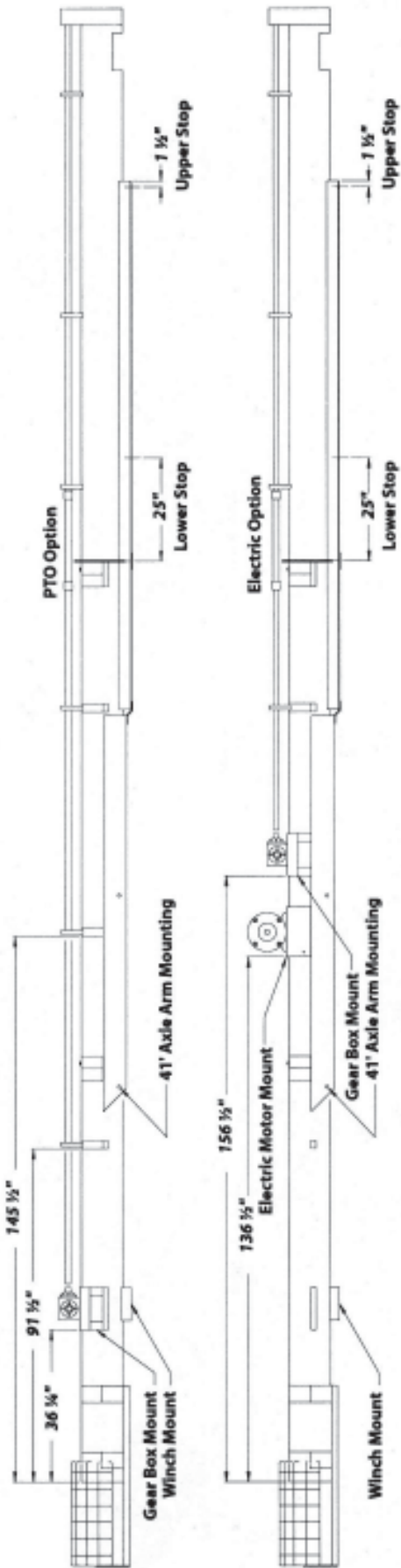


# 41' AUGER PARTS LIST

Item	Part No.	Description	Qty
1	712042	20' Lower Tube Bundle	1
2	711526	20' Upper Tube Bundle	1
3	081034	Wash 15002 Connector	1
4	153761	4x Cable	1
5	054828	Cable Thimble	2
6	021188	Cable Clamp	2
7	080314	Cable Pin	1
8	801314	Track Block	1
9	180745	Lower Track Stop	1
10	180741	Upper Track Stop	1
11	180741	Upper Track Stop	1
12	112644	Washer 19	AP
13	112644	Washer 19	AP
14	112644	Washer 19	AP
15	112644	Washer 19	AP
16	112644	Washer 19	AP
17	112644	Washer 19	AP
18	112644	Washer 19	AP
19	112644	Washer 19	AP
20	112644	Washer 19	AP
21	112644	Washer 19	AP
22	112644	Washer 19	AP
23	112644	Washer 19	AP
24	112644	Washer 19	AP
25	112644	Washer 19	AP
1	838888	1/4" Drive Coupler	1
2	117196	4" Drive Coupler	1
3	117550	8" Drive Coupler	1
4	801340	Bearing Bracket Weldment	1
5	031157	1 1/2" Bearing Flange	2
6	031157	1 1/2" Bearing Flange	2
7	031179	1 1/2" Bearing w/ Lock Collar	1

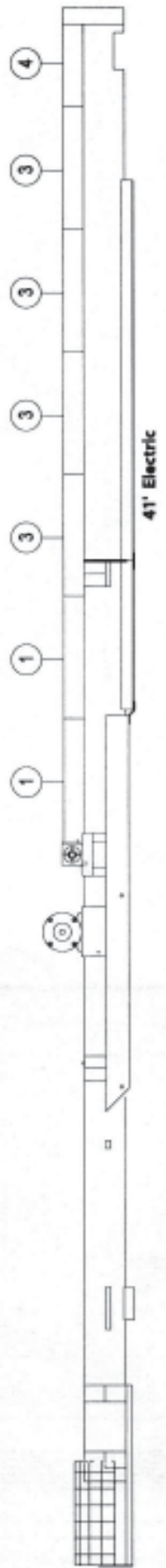


# 41' Band Locations



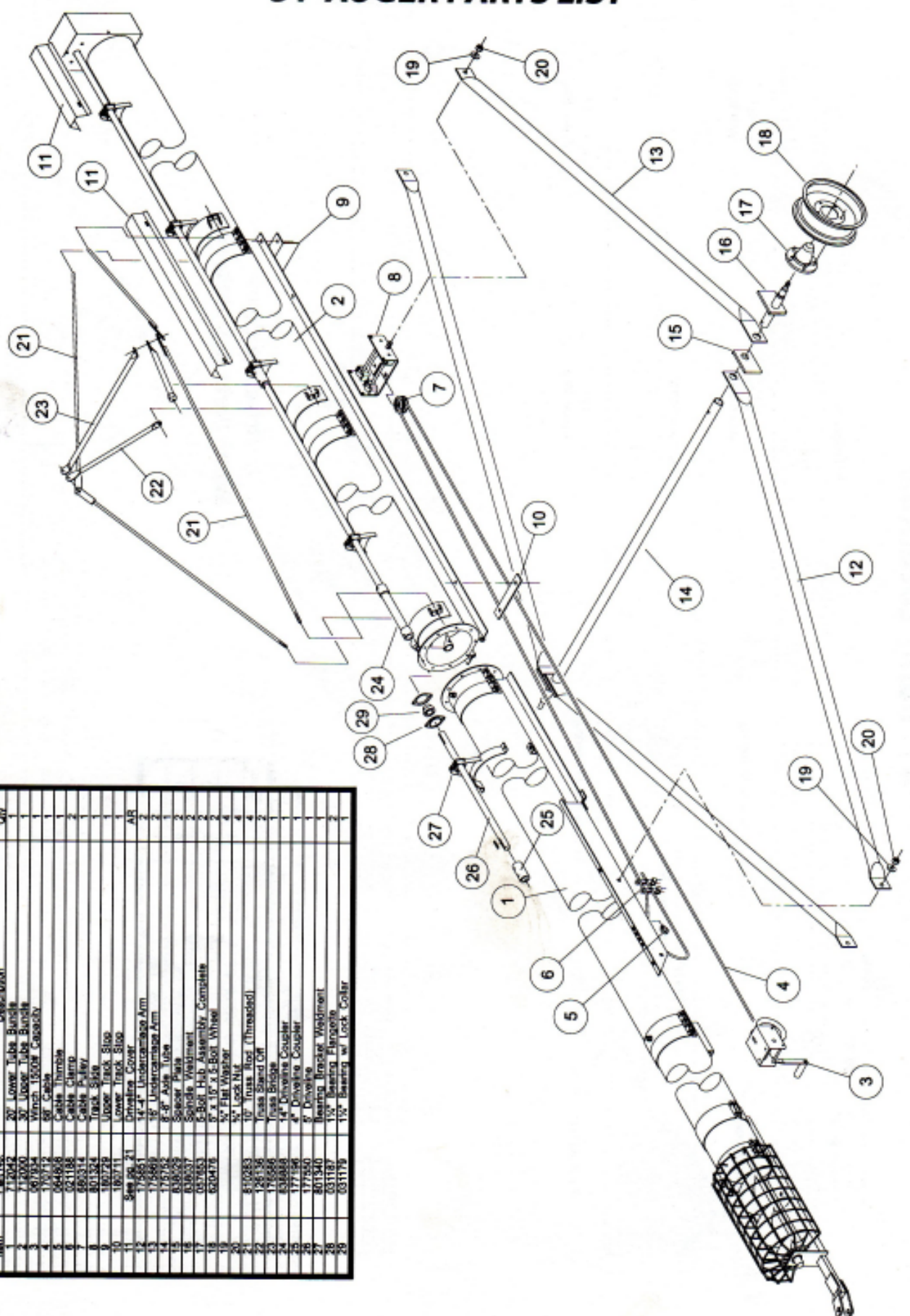
## Driveline Cover Repair Parts & Installation

Item	Part No.	Description	Quantity	
			PTO	Elec.
1	176388	Driveline Cover 42"	1	2
2	176396	Driveline Cover 52"	1	0
3	176404	Driveline Cover 55"	6	4
4	176370	Driveline Cover Top	1	1



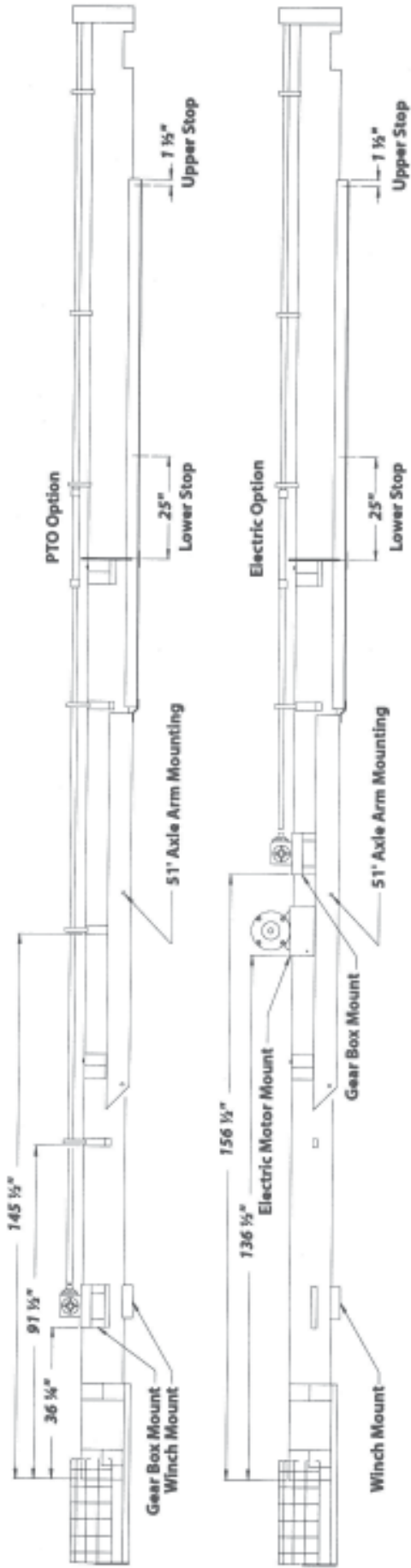
# 51' AUGER PARTS LIST

Item	Part No.	Description	Qty
1	172054	20' Lower Tube Bundle	1
2	172050	30' Upper Tube Bundle	1
3	981934	Winch 1500# Capacity	1
4	170712	90' Cable	1
5	044658	Cable Thimble	2
6	021186	Cable Clamp	2
7	660314	Cable Pulley	2
8	801324	Track Sprocket	2
9	160729	Upper Track Shoe	2
10	160711	Lower Track Shoe	2
11	See Pgs. 21	Driveline Cover	2
12	175851	14" Undercarriage Arm	2
13	175860	15" Undercarriage Arm	2
14	175762	8" Axle Tube	2
15	838025	Sprocket Plate	2
16	838027	Spindle Weldment	2
17	057953	5-Boil. Hub Assembly Complete	2
18	620476	8" x 15" x 5-Boil. Wheel	2
19		1/2" Flat Washer	4
20		1/2" Lock Nut	4
21	810283	10" Intra. Bolt (Threaded)	2
22	126136	Intra Stand Off	2
23	175866	Intra Bridge	2
24	638888	14" Driveline Coupler	2
25	177156	4" Driveline Coupler	2
26	177560	4" Driveline	2
27	801340	Bearing Bracket Weldment	2
28	031187	15" Bearing Flange	2
29	031176	15" Bearing w/ Lock Collar	2





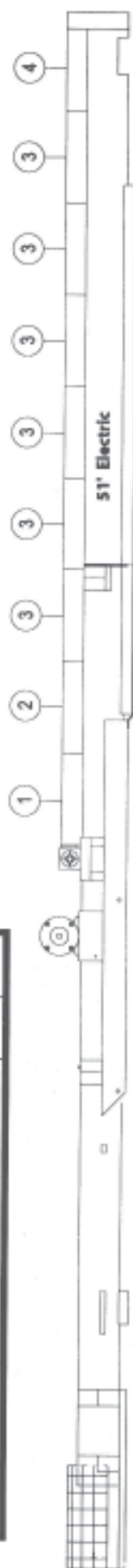
# 51' Band Locations



Quantity

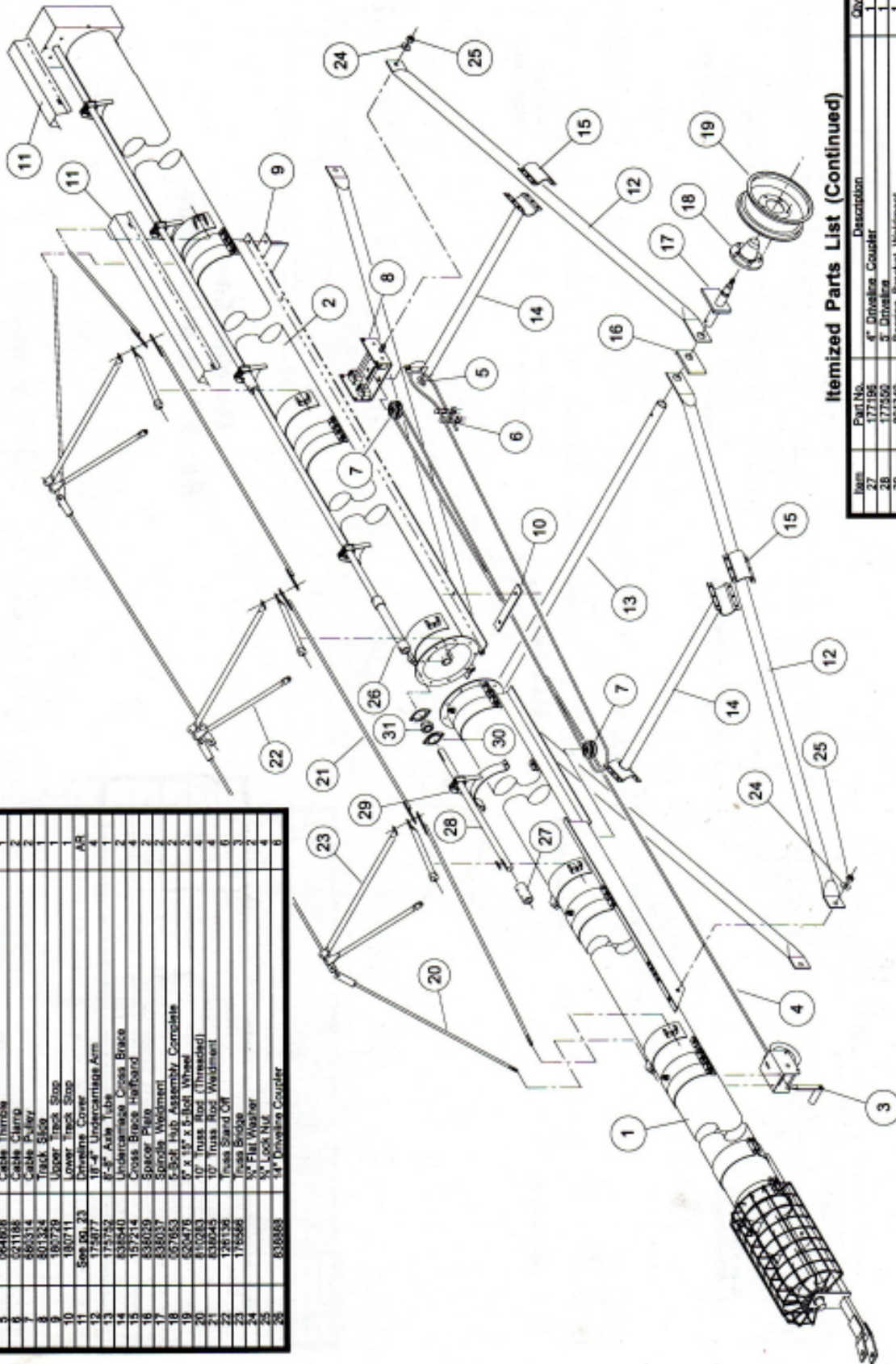
Item	Part No.	Description	PTO	Elec.
1	176368	Driveline Cover 42"	0	1
2	176396	Driveline Cover 52"	2	1
3	176404	Driveline Cover 56"	8	6
4	176370	Driveline Cover Top	1	1

## Driveline Cover Repair Parts & Installation



# 61' AUGER PARTS LIST

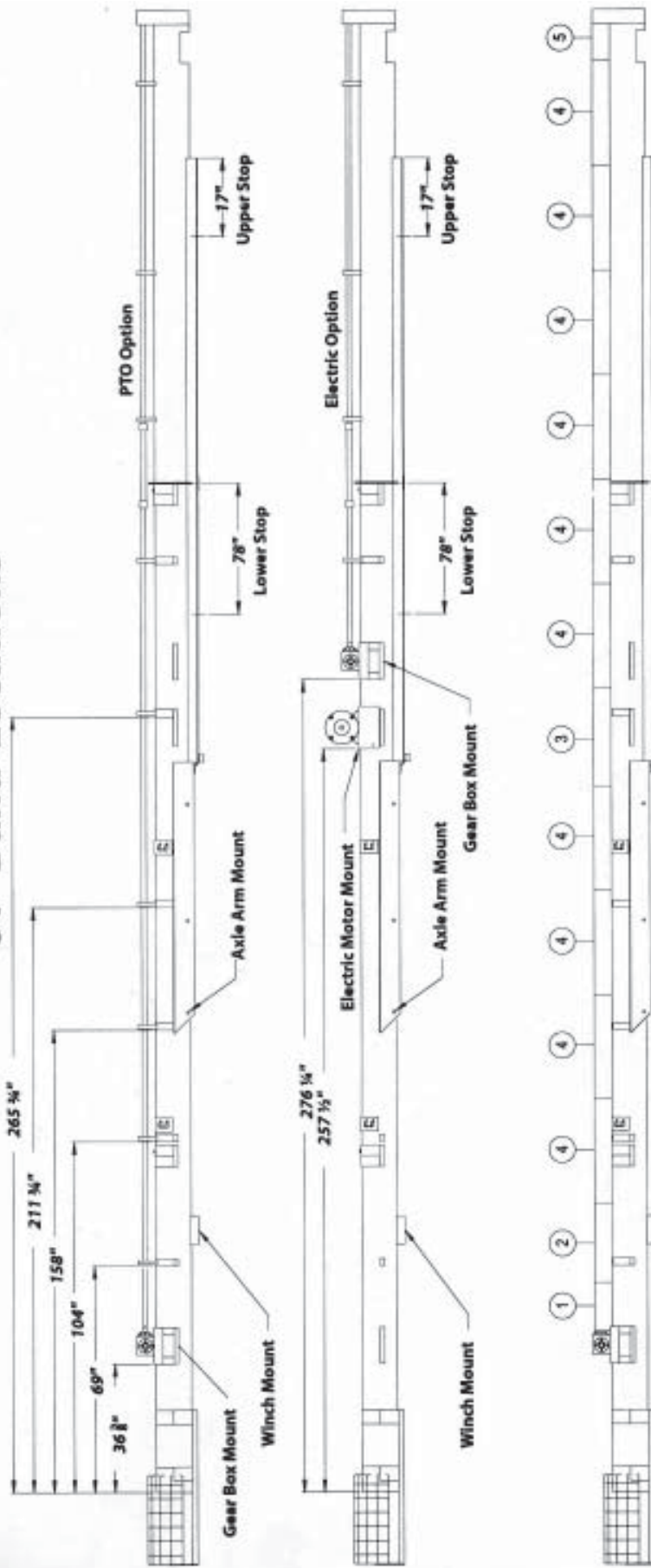
Item	Part No.	Description	Qty
1	712007	30' Lower Tube Bundle	1
2	712000	30' Upper Tube Bundle	1
3	068353	Wrench, 2520M Capacity	1
4	260142	37' Cable	2
5	064406	Cable Turnbuckle	2
6	021186	Cable Clamper	2
7	803314	Cable Pulley	2
8	801334	Track Roller	2
9	162729	U-Bolts, 3/8" Dia, 3" Long	2
10	180711	U-Bolts, 3/8" Dia, 3" Long	2
11	See Item 23	See Item 23	2
12	175217	1/2" U-Bolts	2
13	175217	1/2" U-Bolts	2
14	175217	1/2" U-Bolts	2
15	175217	1/2" U-Bolts	2
16	175217	1/2" U-Bolts	2
17	175217	1/2" U-Bolts	2
18	175217	1/2" U-Bolts	2
19	175217	1/2" U-Bolts	2
20	175217	1/2" U-Bolts	2
21	175217	1/2" U-Bolts	2
22	175217	1/2" U-Bolts	2
23	175217	1/2" U-Bolts	2
24	175217	1/2" U-Bolts	2
25	175217	1/2" U-Bolts	2
26	175217	1/2" U-Bolts	2
27	175217	1/2" U-Bolts	2
28	175217	1/2" U-Bolts	2
29	175217	1/2" U-Bolts	2
30	175217	1/2" U-Bolts	2
31	175217	1/2" U-Bolts	2



## Itemized Parts List (Continued)

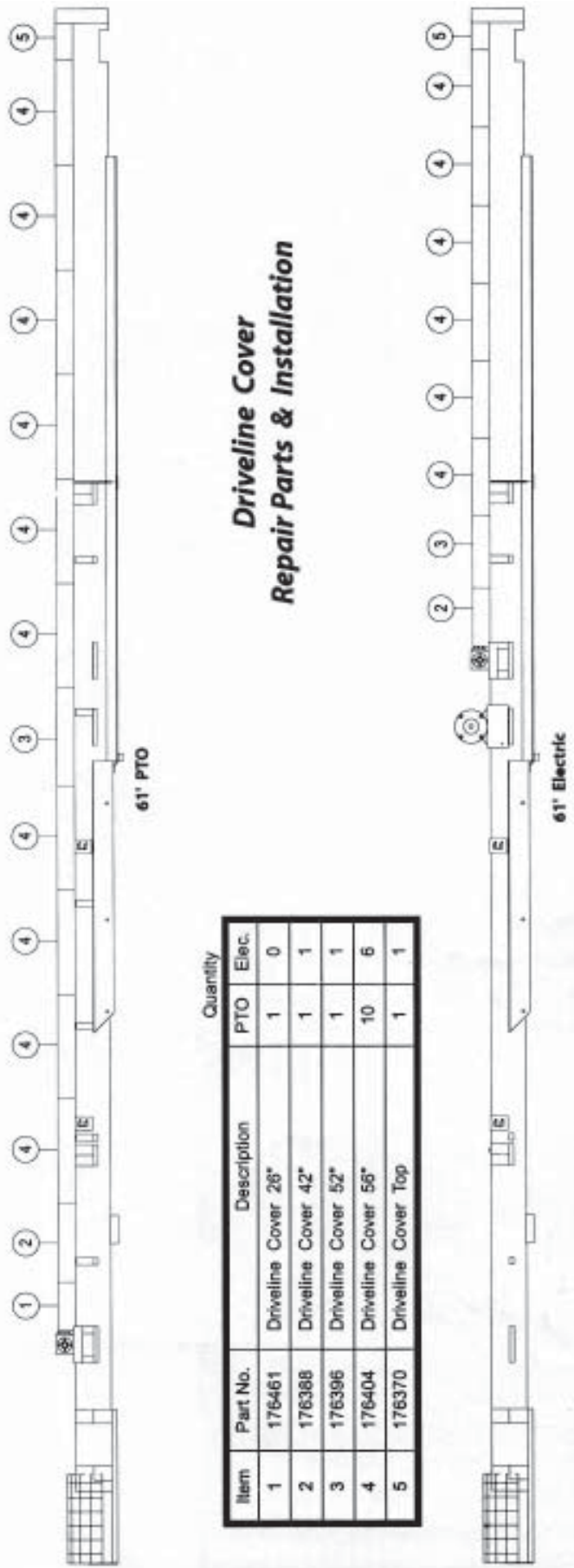
Item	Part No.	Description	Qty
27	177196	4" Drive Roller Coupler	1
28	177500	3" Drive Roller	1
29	801340	Beams, Double, Unthreaded	1
30	021187	1/2" Beams, Flangeless	2
31	021179	1/2" Beams, W/ Lock Collar	2

# 61' Band Locations



# Driveline Cover Repair Parts & Installation

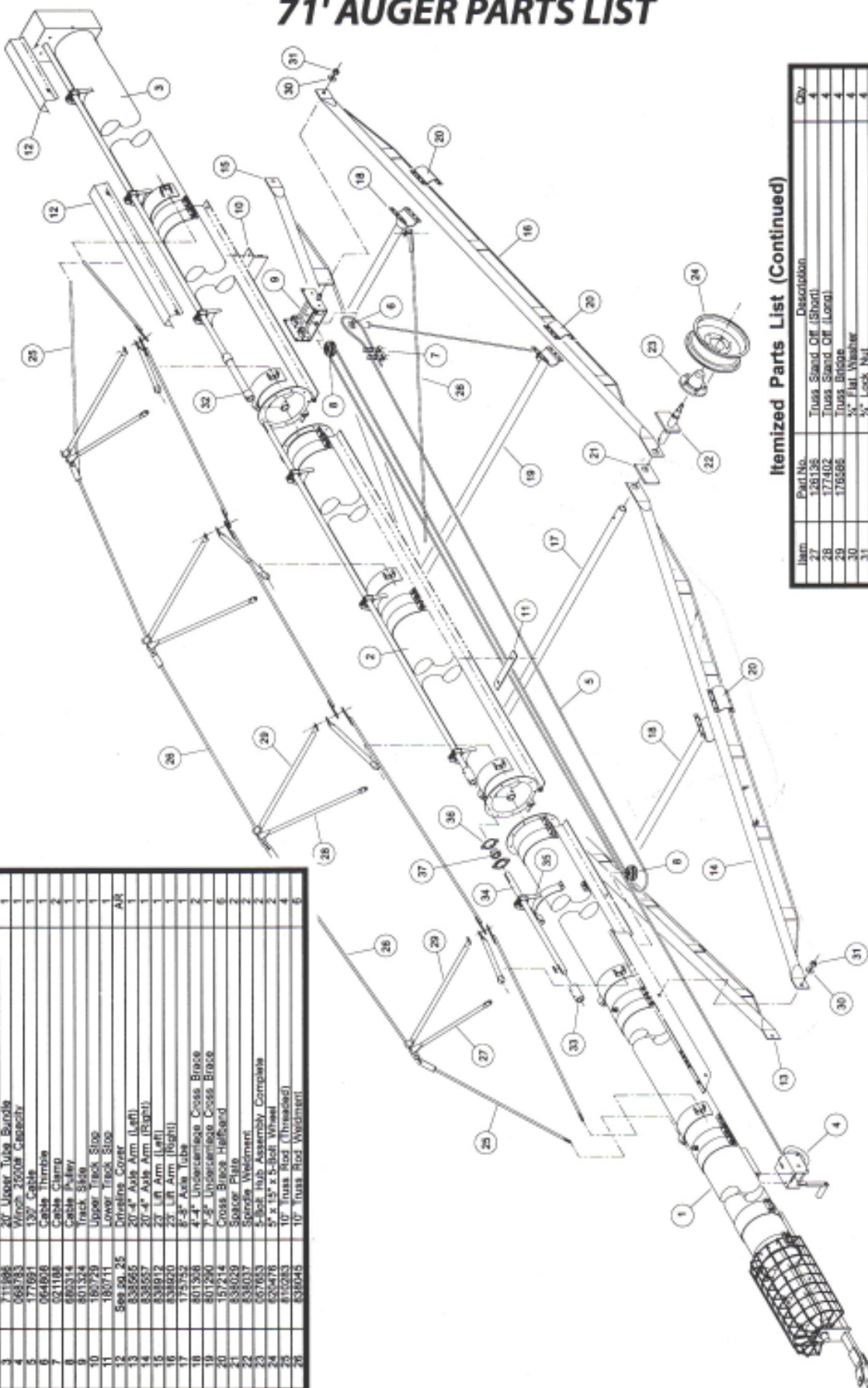
Item	Part No.	Description	Quantity	
			PTO	Elec.
1	176461	Driveline Cover 28"	1	0
2	176388	Driveline Cover 42"	1	1
3	176396	Driveline Cover 52"	1	1
4	176404	Driveline Cover 58"	10	6
5	176370	Driveline Cover Top	1	1





# 71' AUGER PARTS LIST

Item	Part No.	Description	Qty
1	712087	30' Lower Tube Bundle	1
2	712026	30' Mid Tube Bundle	1
3	711888	30' Upper Tube Bundle	1
4	668783	Winch 2500# Capacity	1
5	177681	1/2" Cable	1
6	064808	Cable Thimble	1
7	021108	Cable Clamp	1
8	880314	Cable Pulley	1
9	801384	Track Sledge	1
10	180729	Upper Track Stop	1
11	180711	Lower Track Stop	1
12	See pg. 25	Driveline Cover	1
13	538565	20" 4" Axle Arm (Left)	1
14	538557	20" 4" Axle Arm (Right)	1
15	538912	22" L/R Arm (Left)	1
16	538920	22" L/R Arm (Right)	1
17	175752	8" 3" Axle Tube	1
18	801506	4" 4" Undercamber Cross Brace	1
19	801500	7" 3" Undercamber Cross Brace	1
20	157214	Cross Brace Halfband	1
21	538029	Spacer Plate	1
22	538037	Spindle Weldment	1
23	027653	5-Bolt Hub Assembly Complete	1
24	020476	5" x 15" x 5-Bolt Wheel	1
25	810283	10" Truss Rod (Threaded)	1
26	538045	10" Truss Rod Weldment	1

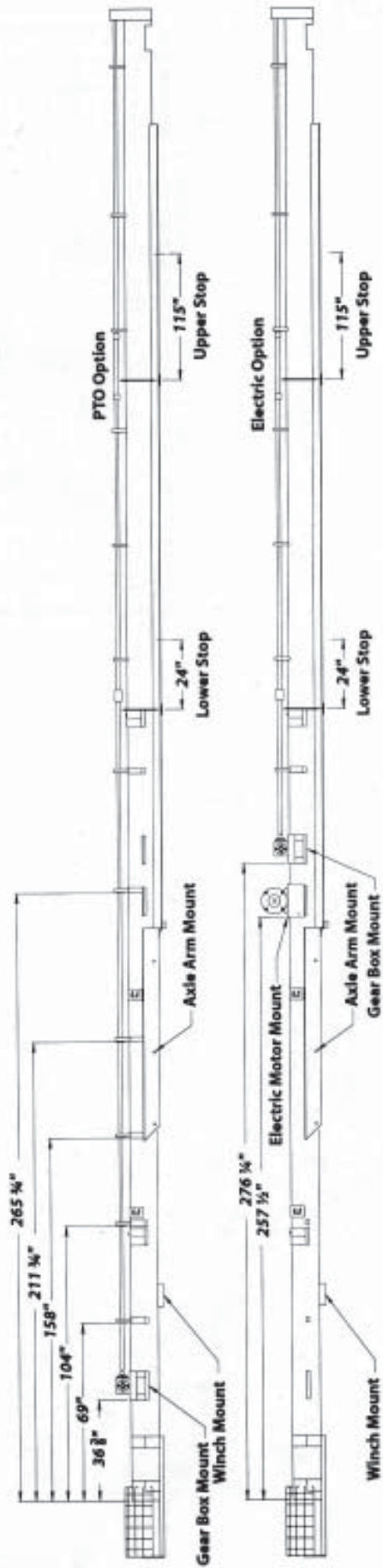


## Itemized Parts List (Continued)

Item	Part No.	Description	Qty
27	128138	Truss Stand Off (Short)	4
28	177402	Truss Stand Off (Long)	4
29	176586	Truss Bridge	4
30	1/2" Flat Washer	1/2" Flat Washer	4
31	1/2" Lock Nut	1/2" Lock Nut	4
32	838888	5" Driveline Coupler	1
33	177196	4" Driveline Coupler	1
34	177550	5" Driveline	1
35	801340	Beams Bracket Weldment	1
36	031187	1 1/2" Bearing Flange	1
37	031179	1 1/2" Bearing W/ Lock Collar	1

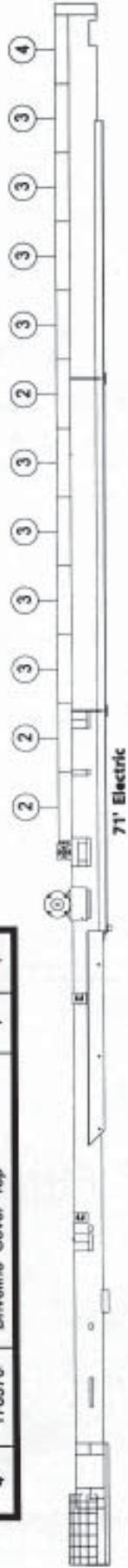


# 71' Band Locations



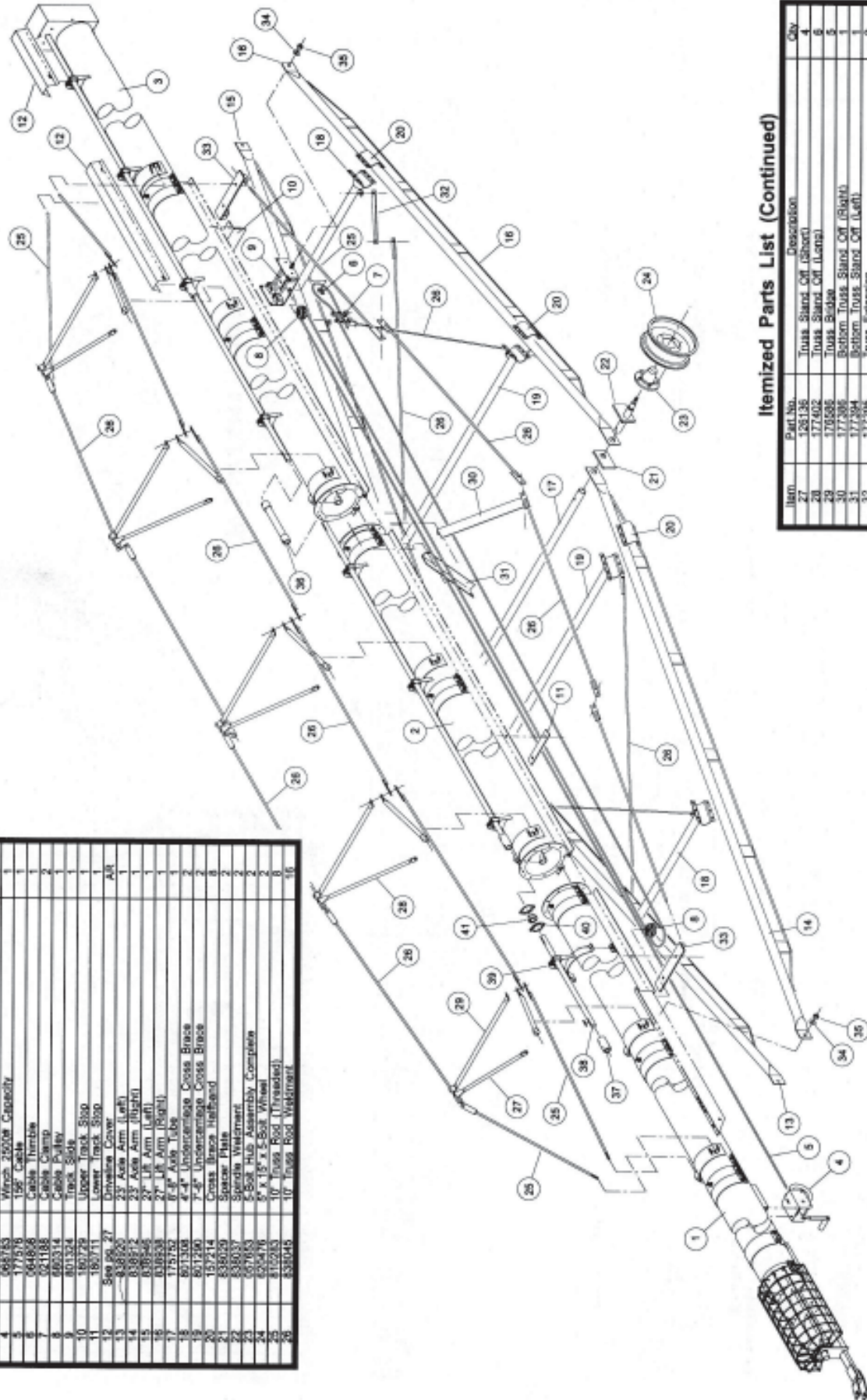
## Driveline Cover Repair Parts & Installation

Item	Part No.	Description	Quantity	
			PTO	Elec.
1	176461	Driveline Cover 26"	1	0
2	176388	Driveline Cover 42"	3	3
3	176404	Driveline Cover 56"	12	8
4	176370	Driveline Cover Top	1	1



# 81' AUGER PARTS LIST

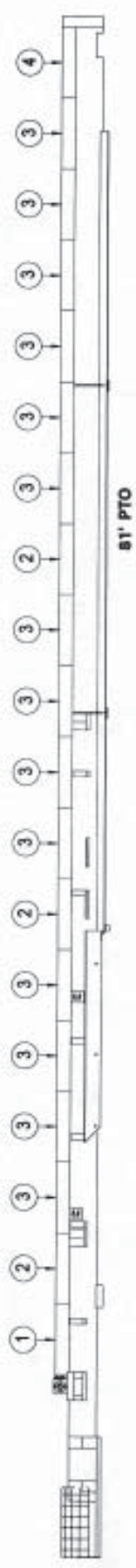
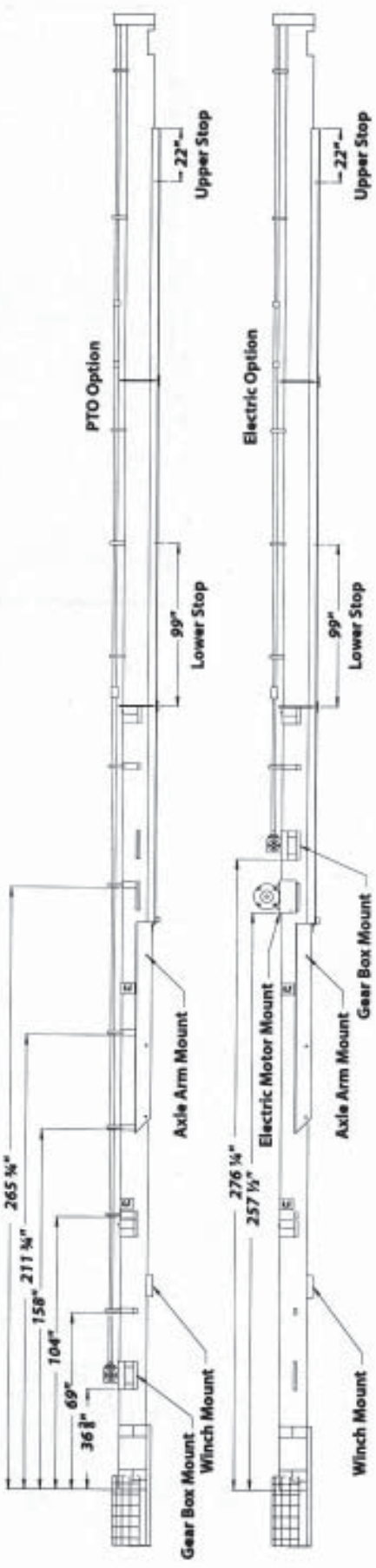
Item	Part No.	Description	Qty
1	712007	30' Lower Tube Bundle	1
2	712026	20' Mid Tube Bundle	1
3	712000	30' Upper Tube Bundle	1
4	068753	Winch 2500# Capacity	1
5	177516	15# Cable	1
6	064858	Cable Thimble	2
7	021188	Cable Camo	2
8	801314	Cable Pulley	1
9	801324	Track Side	1
10	180729	Upper Track Stop	1
11	180711	Lower Track Stop	1
12	See Pp. 27	Drive Line Cover	1
13	838705	33' Axle Arm (Left)	1
14	838712	33' Axle Arm (Right)	1
15	838544	33' LR Arm (Left)	1
16	838553	33' LR Arm (Right)	1
17	175152	6" x 6" Axle Tube	1
18	801108	4" x 4" Unconcentric Cross Brace	1
19	801109	7" x 4" Unconcentric Cross Brace	1
20	157514	Cross Braces Halfrod	1
21	338029	Spacer Plate	1
22	838083	Spacers Weldment	1
23	838081	4" x 4" Plus Assembly Complete	1
24	307016	5" x 15" x 5-8oz Wheel	1
25	112283	10' Inners Rod (Threaded)	1
26	338045	10' Inners Rod Weldment	1



## Itemized Parts List (Continued)

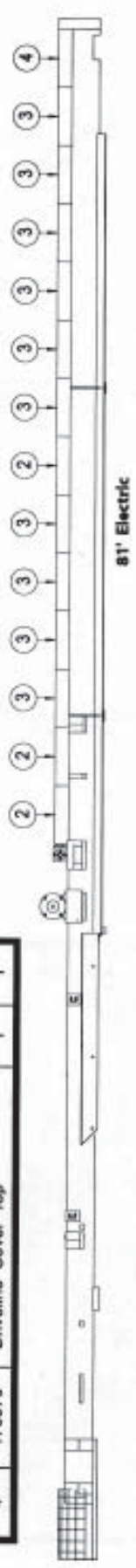
Item	Part No.	Description	Qty
27	126136	Truss Stand Off (Short)	4
28	177402	Truss Stand Off (Long)	6
29	179586	Truss Bodge	6
30	177286	Bottom Truss Stand Off (Right)	1
31	177284	Bottom Truss Stand Off (Left)	1
32	177285	Truss Expansion	2
33	801315	Bottom Truss Takemp Bracket	2
34	5"	Flat Washer	4
35	5"	Lock Nut	4
36	838888	14" Drive Line Coupler	1
37	177186	4" Drive Line Coupler	1
38	177560	5" Drive Line	1
39	801340	Bearing Bracket Weldment	1
40	031187	1 1/2" Bearings Minicette	2
41	031179	1 1/2" Bearings W/ Lock Collar	1

# 81' Band Locations



Item	Part No.	Description	Quantity	
			PTO	Elec.
1	176461	Driveline Cover 26"	1	0
2	176388	Driveline Cover 42"	3	3
3	176404	Driveline Cover 56"	14	10
4	176370	Driveline Cover Top	1	1

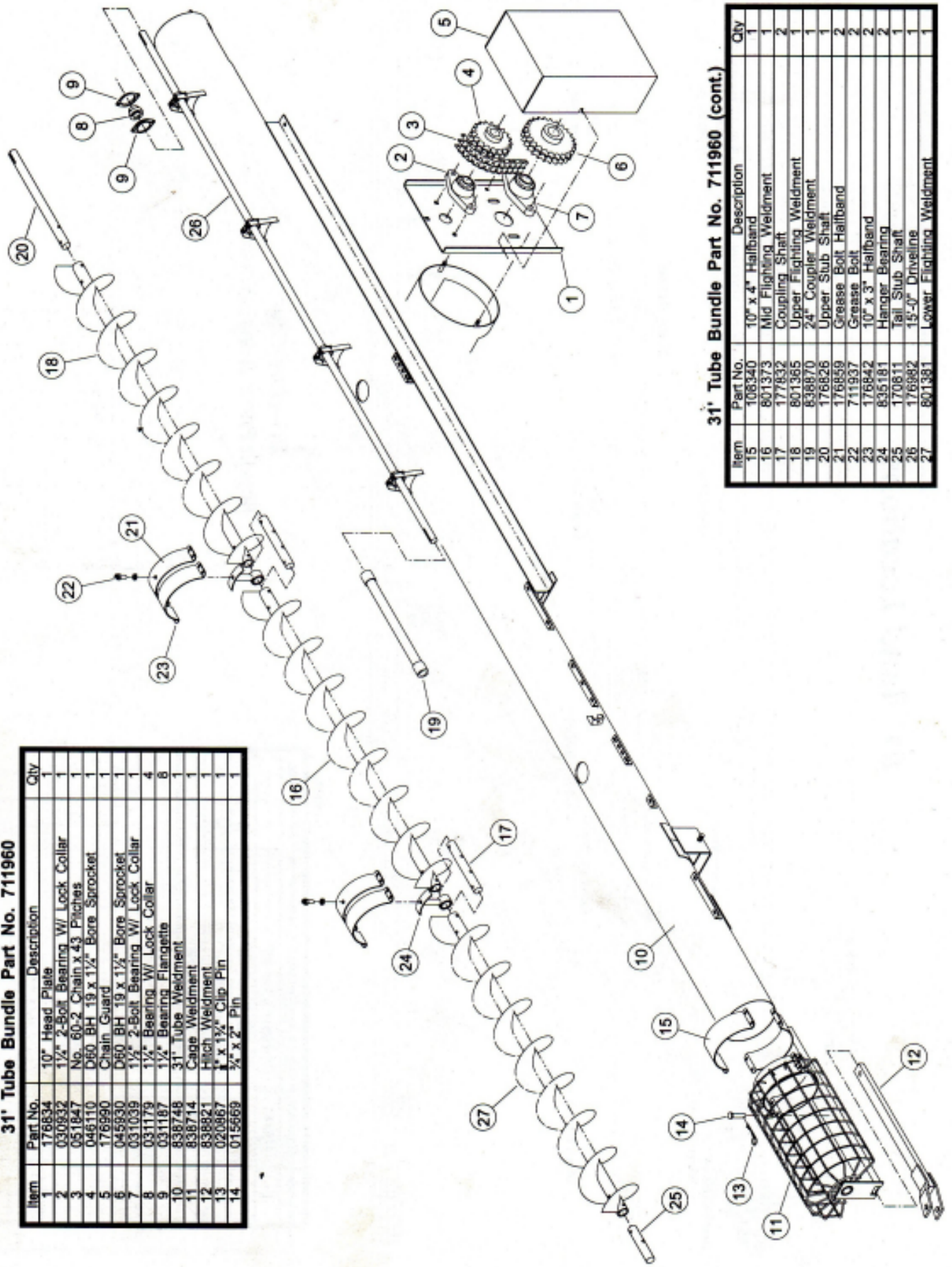
# Driveline Cover Repair Parts & Installation





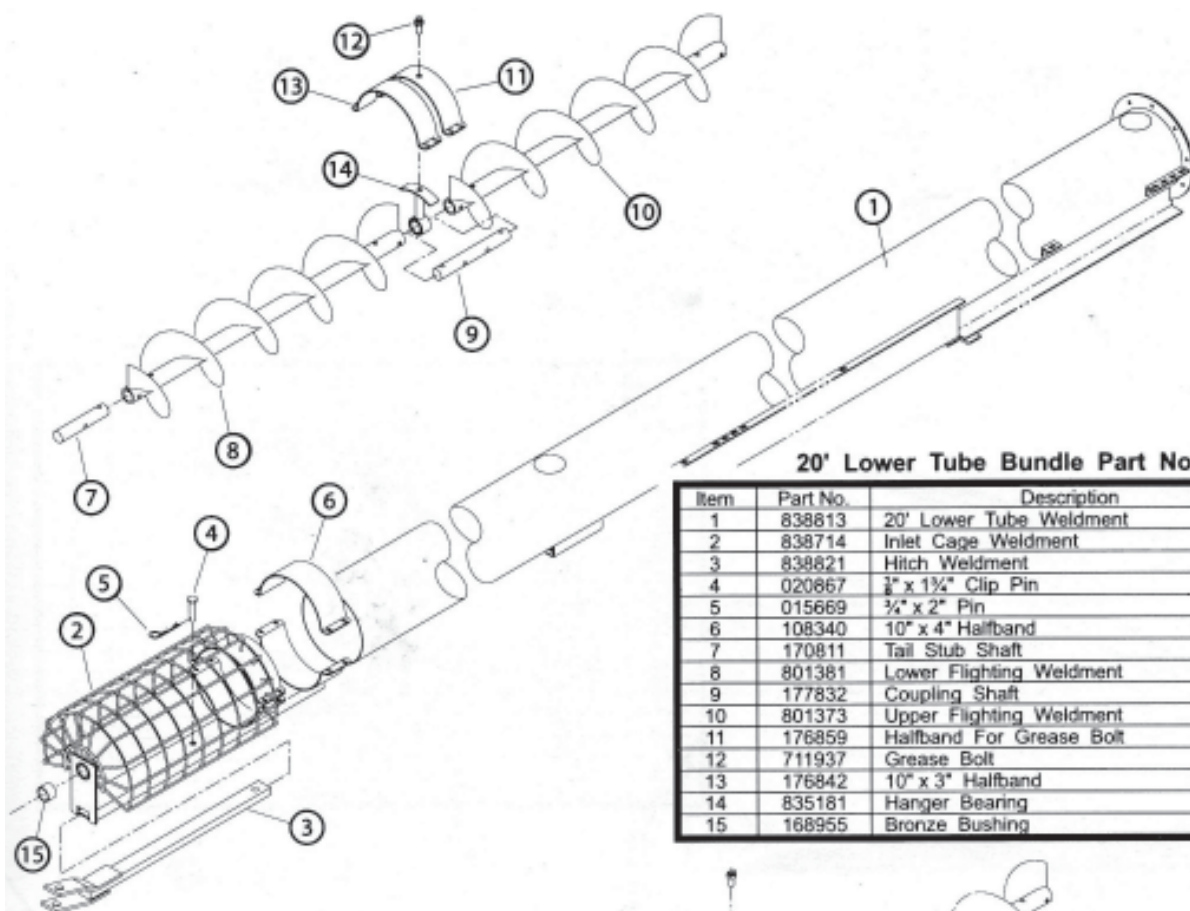
**31' Tube Bundle Part No. 711960**

Item	Part No.	Description	Qty
1	176834	10" Head Plate	1
2	030832	1 1/2" 2-Bolt Bearing W/ Lock Collar	1
3	051847	No. 60-2 Chain x 43 Pitches	1
4	045110	D60 BH 19 x 1 1/2" Bore Sprocket	1
5	176990	Chain Guard	1
6	045830	D60 BH 19 x 1 1/2" Bore Sprocket	1
7	031039	1 1/2" 2-Bolt Bearing W/ Lock Collar	1
8	031179	1 1/2" Bearing W/ Lock Collar	4
9	031187	1 1/2" Bearing Flange	8
10	838748	31' Tube Weldment	1
11	838714	Cage Weldment	1
12	838821	Hitch Weldment	1
13	020867	1 x 1 1/2" Clip Pin	1
14	015669	3/4" x 2" Pin	1



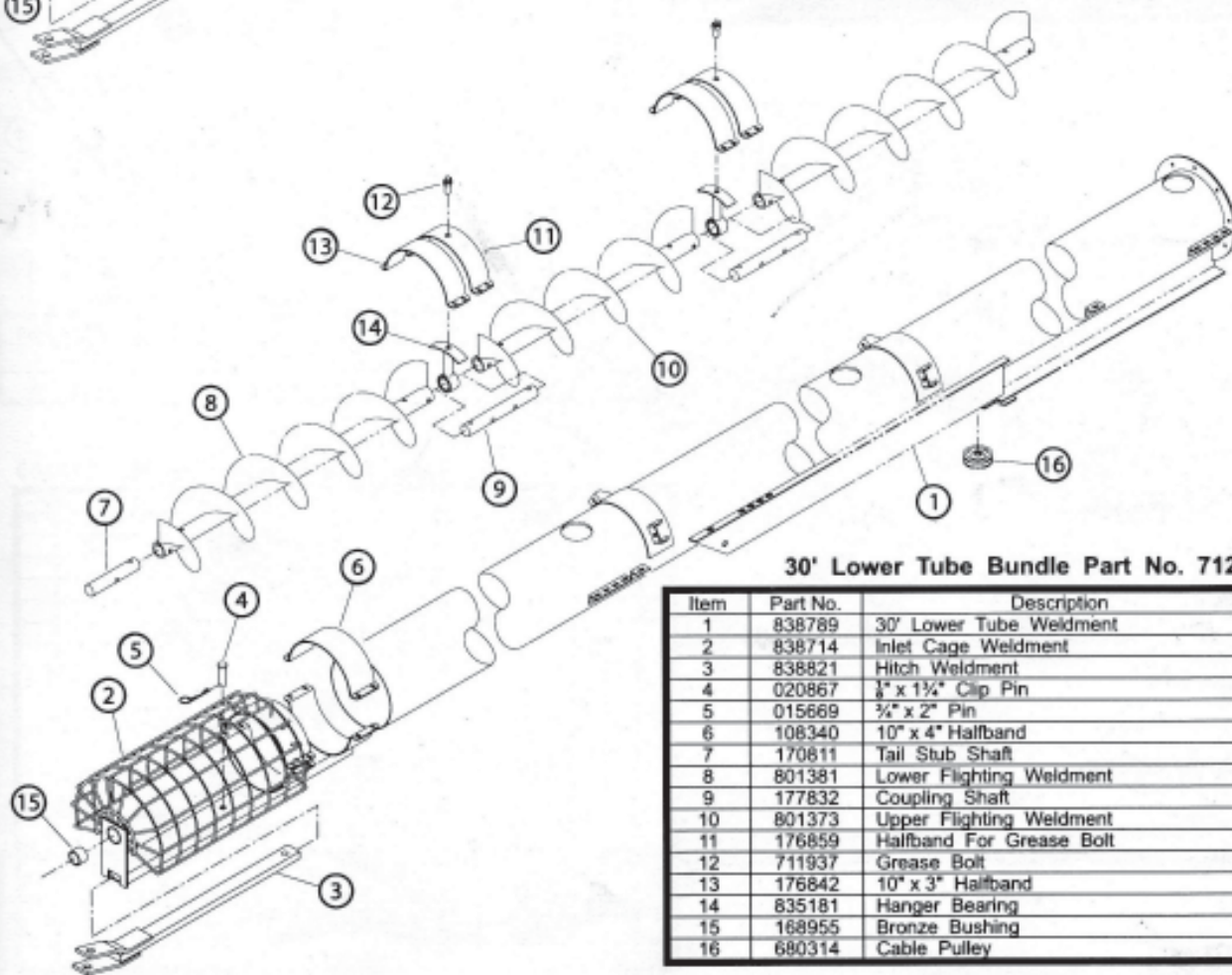
**31' Tube Bundle Part No. 711960 (cont.)**

Item	Part No.	Description	Qty
15	106340	10" x 4" Halfband	1
16	801373	Mid Flighting Weldment	1
17	177832	Coupling Shaft	2
18	801365	Upper Flighting Weldment	1
19	838870	24" Coupler Weldment	1
20	176826	Upper Stub Shaft	1
21	176859	Grease Bolt	2
22	711937	Grease Bolt	2
23	176842	10" x 3" Halfband	2
24	835181	Hanger Bearing	2
25	170811	Tail Stub Shaft	1
26	176982	15'-0" Drive Line	1
27	801381	Lower Flighting Weldment	1



**20' Lower Tube Bundle Part No. 712042**

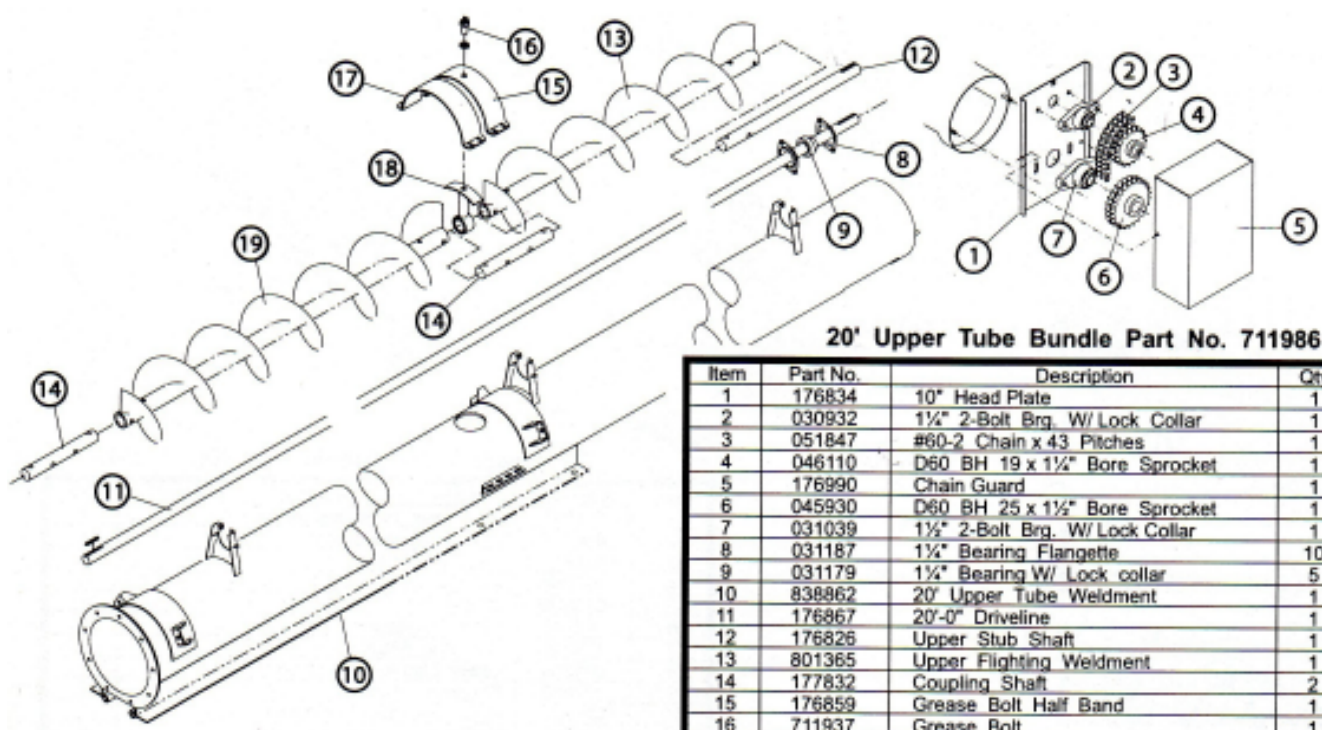
Item	Part No.	Description	Qty
1	838813	20' Lower Tube Weldment	1
2	838714	Inlet Cage Weldment	1
3	838821	Hitch Weldment	1
4	020867	$\frac{3}{8}$ " x $1\frac{1}{2}$ " Clip Pin	1
5	015669	$\frac{3}{4}$ " x 2" Pin	1
6	108340	10" x 4" Halfband	1
7	170811	Tail Stub Shaft	1
8	801381	Lower Fighting Weldment	1
9	177832	Coupling Shaft	1
10	801373	Upper Fighting Weldment	1
11	176859	Halfband For Grease Bolt	1
12	711937	Grease Bolt	1
13	176842	10" x 3" Halfband	1
14	835181	Hanger Bearing	1
15	168955	Bronze Bushing	1



**30' Lower Tube Bundle Part No. 712067**

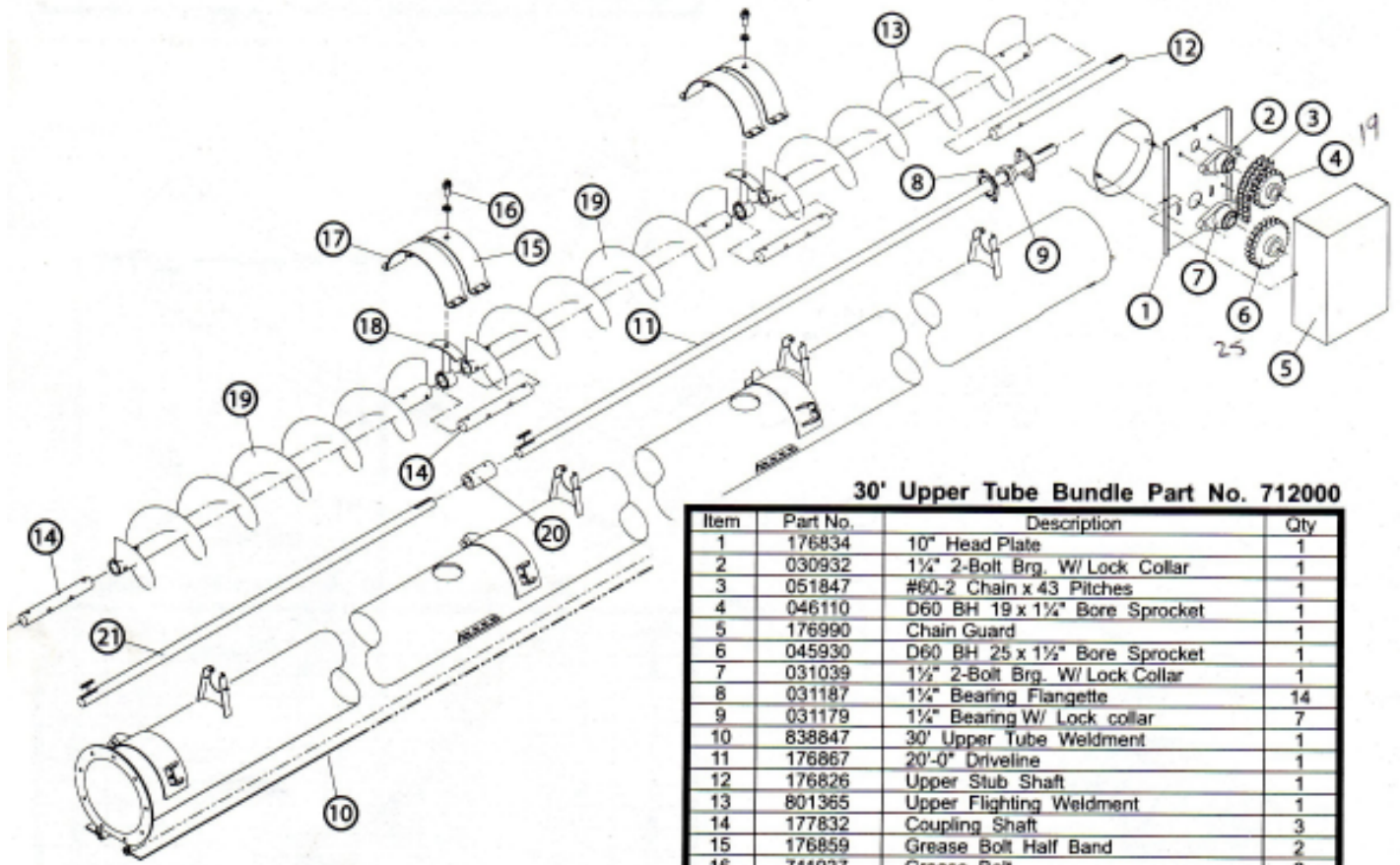
Item	Part No.	Description	Qty
1	838789	30' Lower Tube Weldment	1
2	838714	Inlet Cage Weldment	1
3	838821	Hitch Weldment	1
4	020867	$\frac{3}{8}$ " x $1\frac{1}{2}$ " Clip Pin	1
5	015669	$\frac{3}{4}$ " x 2" Pin	1
6	108340	10" x 4" Halfband	1
7	170811	Tail Stub Shaft	1
8	801381	Lower Fighting Weldment	1
9	177832	Coupling Shaft	2
10	801373	Upper Fighting Weldment	2
11	176859	Halfband For Grease Bolt	2
12	711937	Grease Bolt	2
13	176842	10" x 3" Halfband	1
14	835181	Hanger Bearing	2
15	168955	Bronze Bushing	1
16	680314	Cable Pulley	1





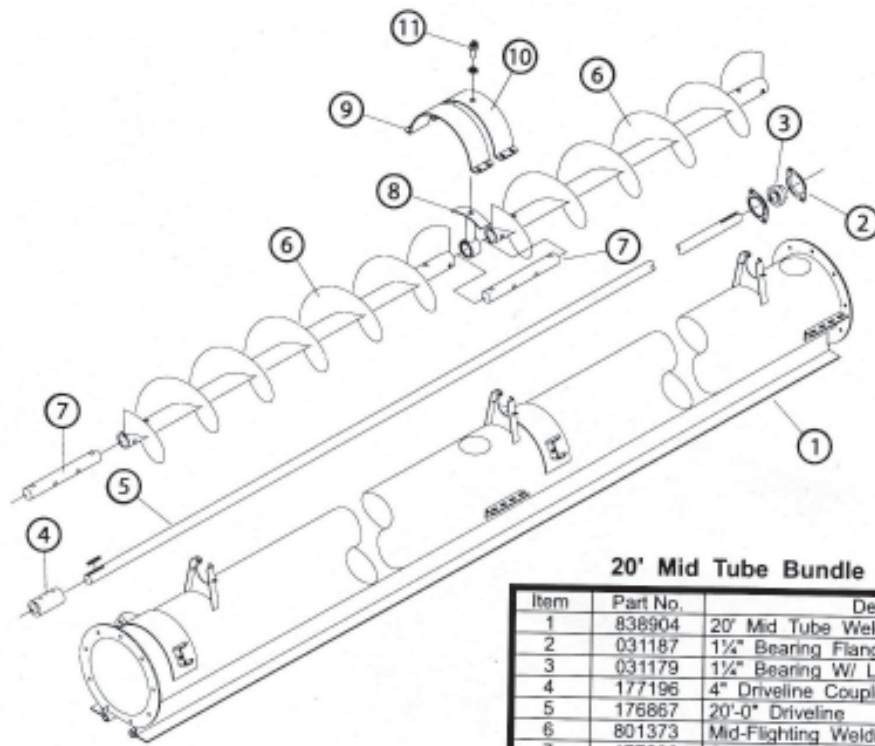
**20' Upper Tube Bundle Part No. 711986**

Item	Part No.	Description	Qty
1	176834	10" Head Plate	1
2	030932	1½" 2-Bolt Brg. W/ Lock Collar	1
3	051847	#60-2 Chain x 43 Pitches	1
4	046110	D60 BH 19 x 1½" Bore Sprocket	1
5	176990	Chain Guard	1
6	045930	D60 BH 25 x 1½" Bore Sprocket	1
7	031039	1½" 2-Bolt Brg. W/ Lock Collar	1
8	031187	1½" Bearing Flangette	10
9	031179	1½" Bearing W/ Lock collar	5
10	838862	20' Upper Tube Weldment	1
11	176867	20'-0" Driveline	1
12	176826	Upper Stub Shaft	1
13	801365	Upper Fighting Weldment	1
14	177832	Coupling Shaft	2
15	176859	Grease Bolt Half Band	1
16	711937	Grease Bolt	1
17	176842	10" x 3" Halfband	1
18	835181	Hanger Bearing	1
19	801373	Mid Fighting Weldment	1



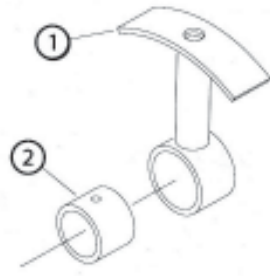
**30' Upper Tube Bundle Part No. 712000**

Item	Part No.	Description	Qty
1	176834	10" Head Plate	1
2	030932	1½" 2-Bolt Brg. W/ Lock Collar	1
3	051847	#60-2 Chain x 43 Pitches	1
4	046110	D60 BH 19 x 1½" Bore Sprocket	1
5	176990	Chain Guard	1
6	045930	D60 BH 25 x 1½" Bore Sprocket	1
7	031039	1½" 2-Bolt Brg. W/ Lock Collar	1
8	031187	1½" Bearing Flangette	14
9	031179	1½" Bearing W/ Lock collar	7
10	838847	30' Upper Tube Weldment	1
11	176867	20'-0" Driveline	1
12	176826	Upper Stub Shaft	1
13	801365	Upper Fighting Weldment	1
14	177832	Coupling Shaft	3
15	176859	Grease Bolt Half Band	2
16	711937	Grease Bolt	2
17	176842	10" x 3" Halfband	2
18	835181	Hanger Bearing	2
19	801373	Mid Fighting Weldment	2
20	177196	4" Driveline Coupler	1
21	177154	10'-0" Driveline	1



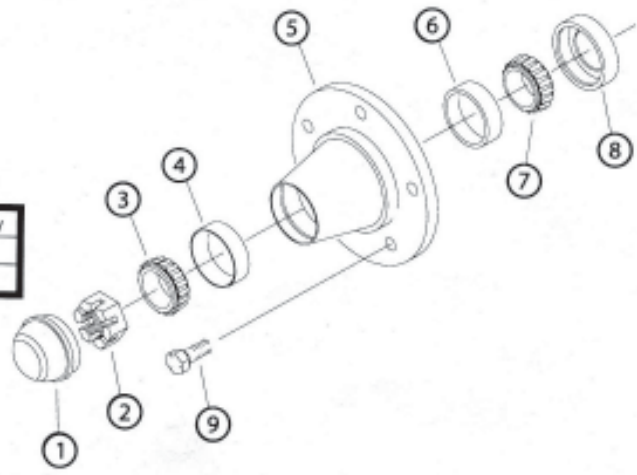
**20' Mid Tube Bundle Part No. 712026**

Item	Part No.	Description	Qty
1	838904	20' Mid Tube Weldment	1
2	031187	1½" Bearing Flangette	10
3	031179	1½" Bearing W/ Lock Collar	5
4	177196	4" Driveline Coupler	1
5	176867	20'-0" Driveline	1
6	801373	Mid-Flighting Weldment	2
7	177832	Coupling Shaft	2
8	835181	Hanger Bearing	1
9	176842	10" x 3" Halfband	1
10	176859	Grease Bolt Half Band	1
11	711937	Grease Bolt	1



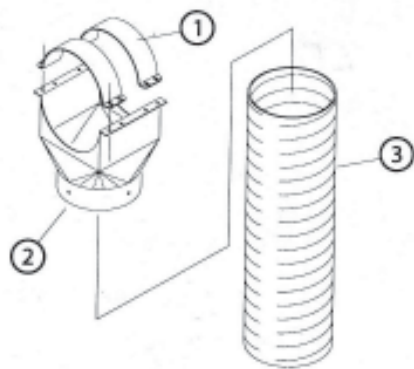
**Hanger Bearing Assembly No. 835181**

Item	Part No.	Description	Qty
1	835181	Hanger Bearing Complete W/ Bushing	1
2	168955	Bronze Bushing 1½" ID x 1.875 OD x 1½"	1



**5-Bolt Hub Assembly No. 057653**

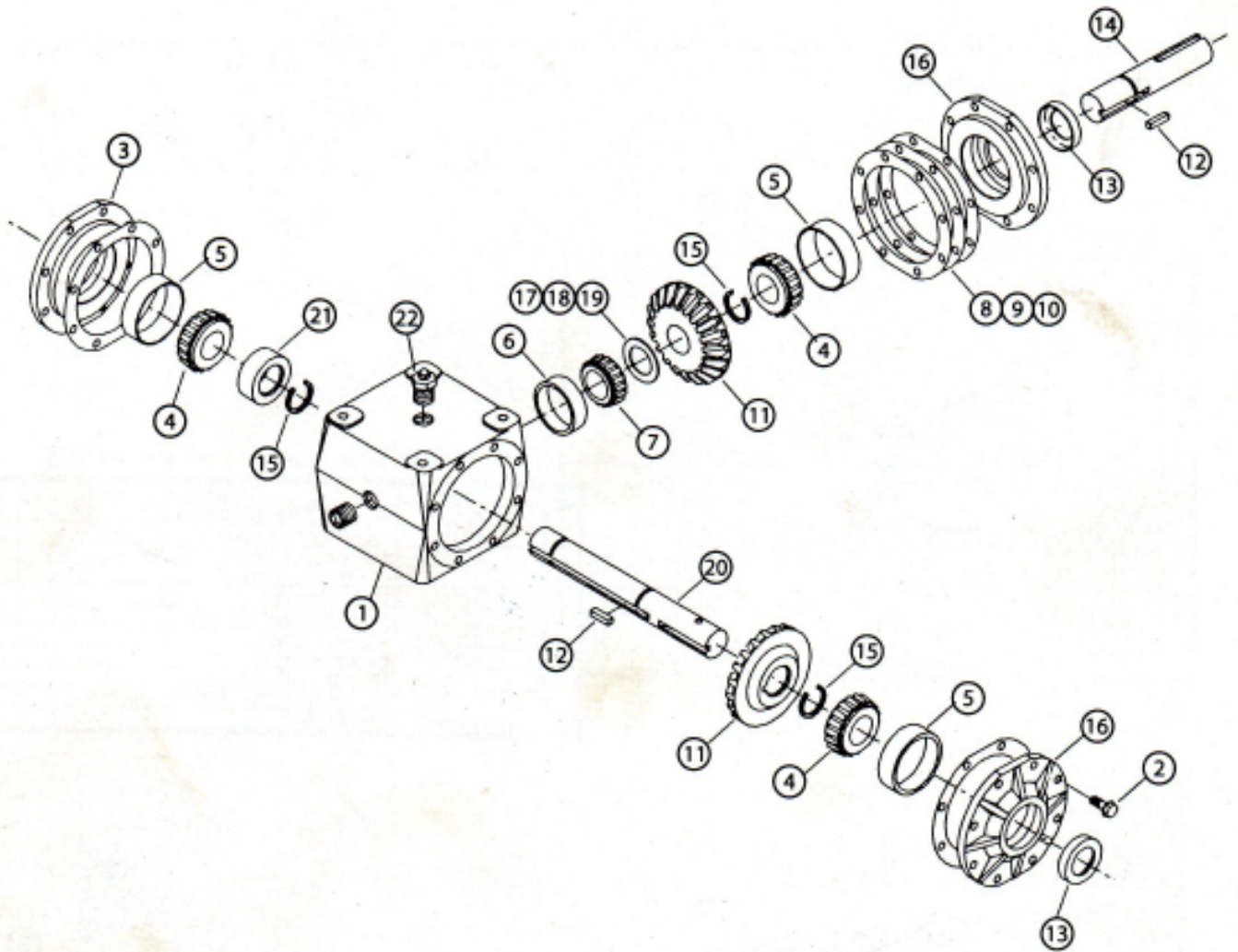
Item	Part No.	Description	Qty
1	057661	Hub Cap	1
2	057463	Castle Nut	1
3	057455	Outer Bearing	1
4	057448	Outer Race	1
5	057430	5-Bolt Hub	1
6	057422	Inner Race	1
7	057414	Inner Bearing	1
8	057406	Seal	1
9	057521	Lug Bolt	5



**Discharge Spout (Optional)**

Item	Part No.	Description	Qty
1	176842	10" x 3" Half Band	2
2	690966	10" Discharge Spout	1
3	700997	10" x 3' Flex Tube	AR
	701003	10" x 5' Flex Tube	AR
	710012	10" x 8' Flex Tube	AR





**412 Gear Box Assembly 069260**

Item	Part No.	Description	Qty
1	551937	412 Gearbox Housing	1
2	551945	SEMS Cap Screw	24
3	551952	Blank Cap	1
4	551960	Bearing Cone	3
5	551978	Bearing Cup	3
6	551986	Bearing Cup	1
7	551994	Bearing Cone	1
8	552000	Gasket (.015)	AR
9	552117	Gasket (.005)	AR
10	552026	Gasket (.003)	AR
11	552034	Gear	2
12	552042	Key	2
13	552059	Seal	2
14	552067	Shaft	1
15	552075	Retaining Ring	3
16	552083	Cap	2
17	552091	Shim (.010)	AR
18	552109	Shim (.005)	AR
19	552117	Shim (.002)	AR
20	552125	Shaft	1
21	552133	Thrust Collar	1
22	552141	Vent Plug	1

# "1000" Top Drive Portable Auger Bundle List

NUMBER	DESCRIPTION	905133 31'	905141 41'	905158 51'	905166 61'	905174 71'	905182 81'
711960	31' TUBE BUNDLE	1					
712042	20' LOWER TUBE BUNDLE		1	1			
712067	30' LOWER TUBE BUNDLE				1	1	1
711986	20' UPPER TUBE BUNDLE		1			1	
712000	30' UPPER TUBE BUNDLE			1	1		1
712026	20' MID-TUBE BUNDLE					1	1
711077	10'-6" UNDERCARRIAGE BUNDLE	2					
711085	12'-7" UNDERCARRIAGE BUNDLE		2				
711093	14'-4" UNDERCARRIAGE BUNDLE			1			
711101	16" UNDERCARRIAGE BUNDLE			1			
711150	18'-4" UNDERCARRIAGE BUNDLE				2		
711168	20'-4" UNDERCARRIAGE BUNDLE					1	
712075	23" UNDERCARRIAGE BUNDLE					1	1
712083	27" UNDERCARRIAGE BUNDLE						1
711879	6'-7" AXLE	1	1				
711861	8'-8" AXLE			1	1	1	1
620476	WHEEL BUNDLE	2	2	2	2	2	2
655522	WINCH BUNDLE W/ 44' CABLE	1					
655811	WINCH BUNDLE W/ 68' CABLE			1			
601351	WINCH BUNDLE W/ 97' CABLE				1		
601641	WINCH BUNDLE W/ 130' CABLE					1	
611095	WINCH BUNDLE W/ 156' CABLE					1	1
601583	MAJOR CRATE	1	1	1	1	1	1
712158	DRIVELINE BEARING BOX	1	1	1	1	1	1
611061	5' DRIVELINE BUNDLE		1	1	1	1	1
712117	HANGER BEARING BOX FOR 20'		1	1		1	1
712133	HANGER BEARING BOX FOR 30'				1	1	1
712257	51' TRUSS BUNDLE			1			
656256	61' TRUSS BUNDLE				1		
176388	42" DRIVELINE COVER	2	2	1	1	3	3
176396	52" DRIVELINE COVER			1	1		
176404	56" DRIVELINE COVER	2	4	6	6	10	10

PART NO. 712166 (AUGER PTO OPTION FOR AUGER LENGTHS 31', 41', 51')							
PART NO. 712190 (AUGER PTO OPTION FOR AUGER LENGTHS 61', 71', 81')							
700773	PTO SHAFT	1	1	1	1	1	1
611079	10' DRIVELINE BUNDLE	1	1	1			
611087	20' DRIVELINE BUNDLE				1	1	1
712174	PARTS CARTON	1	1	1			
712208	PARTS CARTON				1	1	1
176461	26" DRIVELINE COVER				1	1	1
176396	52" DRIVELINE COVER	1	1	1			
176404	56" DRIVELINE COVER	2	2	2	4	4	4

PART NO. 611020 (ELECTRIC POWER OPTION)							
611038	BELT GUARD BUNDLE	1	1	1	1	1	1
611046	PARTS CARTON	1	1	1	1	1	1

PART NO. 601534 (GAS POWER OPTION)							
601559	PARTS CARTON	1	-	-	-	-	-
601542	BELT GUARD BUNDLE	1	-	-	-	-	-
601575	MOTOR MOUNT BUNDLE	1	-	-	-	-	-